




**GROUP 604** **SOCKET HEAD COUNTERSUNK SCREWS**



Page ..... **604-606**

**GROUP 604** **SOCKET HEAD BUTTON SCREWS**



Page ..... **607,608**

**GROUP 600** **SOCKET HEAD CAP SCREWS**




Page ..... **596-602**

**GROUP 602** **SOCKET SET SCREWS**




Page ..... **603**

**GROUP 610** **SOCKET HEAD SHOULDER SCREWS**



Page ..... **609**

**GROUP 615** **FIX-IT KITS**



Page ..... **610-616**

**GROUP 620** **THREAD REPAIR**



Page ..... **617**

**GROUP 635** **WOODSCREWS & NAILS**



Page ..... **618**

**GROUP 644** **RIVET NUTS**




Page ..... **619**

**GROUP 649** **CIRCLIPS**



Page ..... **619**

**GROUP 650** **DOWEL PINS**



Page ..... **620**

**GROUP 651** **EXTRACTOR DOWELS**



Page ..... **620**

**GROUP 670** **SCREWED STUDDING**



Page ..... **621**

**GROUP 671** **STEEL BALLS**



Page ..... **621**

# SECTION 6 Contents



## FASTENERS

### Section 6 Product Groups 600 - 671

#### Product Grading



Production



Professional



Industrial



Workshop



Maintenance



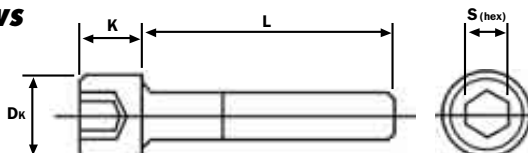
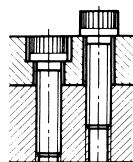
Home Improver

Description	Group	Page
Circlips	649	619
Dowel Pins	650	620
Extractor Dowels	651	620
Fix-It Kits	615	610-616
Nails	635	618
Rivet Nuts	644	619
Screwed Studding	670	621
Socket Head Button Screws	604	607,608
Socket Head Cap Screws	600	596-602
Socket Head Countersunk Screws	604	604-606
Socket Head Flange Button Screws	604	608
Socket Set Screws	602	603
Socket Head Shoulder Screws	610	609
Steel Balls	671	621
Thread Repair	620	617
Woodscrews	635	618

**GROUP 600 SOCKET HEAD CAP SCREWS**

**QUALFAST Socket Head Cap Screws - Metric**

High Grade Alloy Steel to **BS EN ISO 898/1 Grade 12.9**. Suitable for all high tensile applications. Maximum operating temperature (unplated): 300°C.



Thread Size	Dimensions (mm)		
	dk	k	S (hex)
M1.6	3.00	1.6	1.5
M2	3.80	2.0	1.5
M2.5	4.50	2.5	2.0
M3	5.68	3.0	2.5
M4	7.22	4.0	3.0
M5	8.72	5.0	4.0

Dimensions to **BS EN ISO 4762 DIN 912**

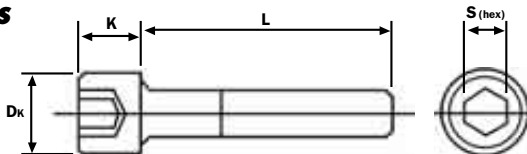
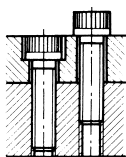
**FASTENERS**

<b>M1.6 to M5</b>		<b>ISO Metric - Self Colour</b>		<b>ISO Metric - Self Colour</b>		<b>ISO Metric BZP</b>		<b>ISO Metric A2 Stainless</b>	
		<b>Standard (Self-Colour)</b>		<b>Thread to Head (Self-Colour)</b>		<b>Bright Zinc Plated (BZP)</b>		<b>A2 Stainless Steel</b>	
Size	L	Box Qty	Order Code QFT-600	Order Code QFT-600		Order Code QFT-600		Order Code QFT-606	
M1.6	4	200	-0905F	-		-		-	
	6	200	-0906G	-		-		-	
	3	200	-0912N	-	<b>NEW</b>	-		-	<b>NEW</b>
M2	4	200	-0913P	-		-		-5913P	
	5	200	-0914Q	-		-		-5914Q	
	6	200	-0915R	-		-		-5915R	
	8	200	-0916S	-		-		-5916S	
	10	200	-0917T	-		-		-5917T	
	12	200	-0918V	-		-		-5918V	
	16	200	-	-		-		-5919A	
M2.5	20	200	-	-		-		-5919F	
	4	200	-0920T	-		-		-5919W	
	5	200	-	-		-		-5920X	
	6	200	-0921Y	-		-		-5921Y	
	8	200	-0922Z	-		-		-5922Z	
	10	200	-0924A	-		-		-5924A	
	12	200	-0925B	-		-		-5925B	
M3	16	200	-0925R	-		-		-5925M	
	20	200	-0926F	-		-		-5926C	
	4	200	-	-		-		-	
	5	200	-0927D	-		-8048Y		-5927D	
	6	200	-0928E	-		-8049Z		-5928E	
	8	200	-0929F	-		-8050A		-5929F	
	10	200	-0930G	-		-8052C		-5930G	
	12	200	-0931H	-		-8054E		-5931H	
	14	200	-0932J	-		-		-	
	15	200	-0933K	-		-		-	
	16	200	-0934L	-		-8056G		-5934L	
	18	200	-	-		-		-5935A	
	20	200	-0935M	-		-8058J		-5935M	
	25	200	-0936N	-		-8059K		-5936N	
M4	30	200	-0937P	-		-8061R		-5937P	
	35	200	-0938Q	-		-		-5938Q	
	40	200	-0939C	-		-8064G		-5938W	
	45	200	-0939E	-		-8068M		-	
	50	200	-0939F	-		-		-	
	60	200	-0939H	-		-		-	
	5	200	-0939R	-		-		-	
	6	200	-0940S	-		-8101Q		-5940S	
	8	200	-0941T	-		-8102R		-5941T	
	10	200	-0942V	-		-8103F		-5942V	
	12	200	-0943W	-		-8104A		-5944X	
	14	200	-0944X	-		-		-5945Y	
	15	200	-0945Y	-		-		-	
	16	200	-0946Z	-		-8105B		-5946Z	
18	200	-0947F	-		-		-		
M5	20	200	-0948A	-		-8105T		-5948A	
	22	200	-0948G	-		-		-	
	25	200	-0949B	-		-8106C		-5949B	
	30	200	-0950C	-		-8106D		-5950C	
	35	200	-0951D	-		-8106F		-	
	40	200	-0952E	-		-8107A		-5952E	
	45	200	-0953F	-		-		-5953F	
	50	200	-0954G	-		-8107J		-5954G	
	55	200	-0954W	-		-		-	
	60	200	-0954Z	-		-8107L		-	
	65	200	-0955A	-		-		-	
	70	200	-0955B	-		-		-	
	75	200	-0955C	-		-		-	
	80	200	-0955D	-		-		-	
100	200	-0955E	-		-		-		
M5	6	200	-0955H	-		-8108P		-5956A	
	8	200	-0956J	-		-8108R		-5956J	
	10	200	-0957K	-		-8109J		-5957K	
	12	200	-0958L	-		-8110A		-5958L	
	14	200	-0959M	-		-		-5959M	
	15	200	-0960N	-		-		-	
	16	200	-0961P	-		-8111B		-5961P	
	18	200	-0962Q	-		-		-5962Q	
	20	200	-0963R	-		-8111D		-5963R	
	22	200	-0964S	-		-8111R		-	
	25	200	-0965T	-		-8112C		-5965T	
	30	200	-0966V	-		-8113D		-5966V	
	35	200	-0967W	-4500A		-8114E		-5967W	
	40	200	-0968X	-4501B		-8115F		-5968X	
45	200	-0969Y	-4502C		-8115G		-5969M		
50	200	-0970Z	-4503D		-8116G		-5969Y		
55	200	-0972A	-4504E		-8116R		-		
60	200	-0973B	-4505F		-8117A		-5973B		

**SOCKET HEAD CAP SCREWS**





**QUALFAST Socket Head Cap Screws - Metric**

High Grade Alloy Steel to **BS EN ISO 898/1 Grade 12.9**. Suitable for all high tensile applications. Maximum operating temperature (unplated): 300°C.



Dimensions to **BS EN ISO 4762 DIN 912**

Thread Size	Dimensions (mm)		
	dk	k	S (hex)
<b>M5</b>	8.72	5.0	4.0
<b>M6</b>	10.22	6.0	5.0
<b>M8</b>	13.27	8.0	6.0
<b>M10</b>	16.27	10.0	8.0

<b>M5 to M10</b>	<b>ISO Metric - Self Colour</b>	<b>ISO Metric - Self Colour</b>	<b>ISO Metric - BZP</b>	<b>ISO Metric A2 Stainless</b>
				
	<b>Standard (Self-Colour)</b>	<b>Thread to Head (Self-Colour)</b>	<b>Bright Zinc Plated (BZP)</b>	<b>A2 Stainless Steel</b>
Size	L	Box Qty	Order Code	Order Code
			<b>QFT-600</b>	<b>QFT-600</b>
<b>M5 cont.</b>	65	200	-0974C	-
	70	200	-0975D	-
	75	200	-0975K	-
	80	200	-0975R	-
	90	200	-0975T	-
	100	200	-0975X	-8118T
	110	200	-0975Z	-
	120	200	-0976A	-
	130	200	-0976B	-
	140	200	-0976C	-
<b>M6</b>	150	200	-0976D	-
	6	200	-0976E	-
	8	200	-0976F	-8119H
	10	200	-0977F	-8119K
	12	200	-0978G	-8120A
	14	200	-0979H	-
	15	200	-0980J	-
	16	200	-0981K	-8121B
	18	200	-0982L	-8121C
	20	200	-0983M	-8122C
<b>M6</b>	22	200	-0984N	-
	25	200	-0985P	-8123D
	30	200	-0986Q	-8124E
	35	200	-0987R	-8125A
	40	200	-0988S	-8125F
	45	200	-0989T	-8126G
	50	200	-0990V	-8127H
	55	200	-0991W	-8127J
	60	200	-0992X	-8127K
	65	200	-0993Y	-
<b>M8</b>	70	200	-0994Z	-4521B
	75	200	-0996A	-4522C
	80	200	-0997B	-4523D
	90	200	-0998C	-4524E
	100	200	-0999D	-4525F
	110	200	-1000E	-
	120	200	-1001F	-4526G
	130	200	-1001H	-
	140	200	-1001K	-
	150	200	-1001P	-
<b>M8</b>	160	200	-1001T	-
	170	200	-1001V	-
	200	200	-1001W	-
	10	200	-1002G	-8128J
	12	200	-1003H	-8128K
	14	200	-	-8128L
	15	200	-1005K	-
	16	200	-1006L	-8129R
	18	200	-1007M	-
	20	200	-1008N	-8130A
<b>M8</b>	25	200	-1010Q	-8131B
	30	200	-1011R	-8132C
	35	200	-1012S	-8132R
	40	200	-1013T	-8133D
	45	200	-1014V	-8134E
	50	100	-1015W	-8135F
	55	100	-1016X	-8135G
	60	100	-1017Y	-8136G
	65	100	-1018Z	-8136T
	70	100	-1020A	-8137R
<b>M10</b>	75	100	-1021B	-8138F
	80	100	-1022C	-8138G
	85	100	-1023A	-
	90	100	-1023D	-8138J
	100	100	-1024E	-8138L
	110	100	-1025F	-8138N
	120	100	-1026G	-
	130	100	-1027H	-
	140	100	-1028J	-
	150	100	-1029K	-
<b>M10</b>	160	100	-1030L	-
	180	100	-1031M	-
	200	100	-1032N	-
	10	100	-1033P	-
	12	100	-1034Q	-8139B
	15	100	-1036S	-
	16	100	-1037T	-8139G
	18	100	-1038V	-
	20	100	-1039W	-8139T

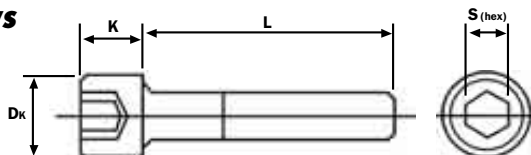
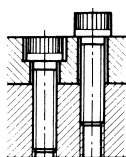
**FASTENERS**

**PRODUCTS ARE ONLY AVAILABLE VIA YOUR DISTRIBUTOR**

**GROUP 600 SOCKET HEAD CAP SCREWS**

**QUALFAST Socket Head Cap Screws - Metric**

High Grade Alloy Steel to **BS EN ISO 898/1 Grade 12.9**. Suitable for all high tensile applications. Maximum operating temperature (unplated): 300°C.



Dimensions to **BS EN ISO 4762 DIN 912**

Thread Size	Dimensions (mm)		
	dk	k	S (hex)
<b>M10</b>	16.27	10.0	8.0
<b>M12</b>	18.27	12.0	10.0
<b>M14</b>	21.33	14.0	12.0
<b>M16</b>	24.33	16.0	14.0

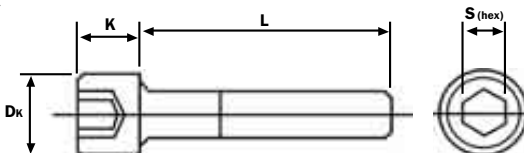
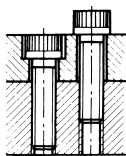
**FASTENERS**

<b>M10 to M16</b>		<b>ISO Metric - Self Colour</b>	<b>ISO Metric - Self Colour</b>	<b>ISO Metric BZP</b>	<b>ISO Metric A2 Stainless</b>
Size	L	Box Qty	Order Code	Order Code	Order Code
			<b>QFT-600</b>	<b>QFT-600</b>	<b>QFT-606</b>
<b>M10 cont.</b>	25	100	-1041Y	-	-6041Y
	30	100	-1042Z	-	-6042Z
	35	100	-1044A	-	-6044A
	40	100	-1045B	-	-6045B
	45	100	-1046C	-4560A	-6046C
	50	100	-1047D	-4561B	-6047D
	55	100	-1048E	-	-6048E
	60	100	-1049F	-	-6049F
	65	100	-1050G	-	-6050G
	70	100	-1051H	-4563D	-6051H
	75	100	-1052J	-	-6052J
	80	100	-1053K	-4564E	-6053K
	90	100	-1054L	-	-6054L
	100	100	-1055M	-	-6055M
	110	100	-1056N	-	-6056N
	120	100	-1057P	-	-6057P
	130	100	-1058Q	-	-6058Q
	140	100	-1059R	-	-
	150	100	-1060S	-	-6060S
	160	100	-1061T	-	-6061T
180	100	-1062V	-	-	
200	100	-1063W	-	-8142Y	
220	100	-1063Y	-	-	
250	100	-1064B	-	-	
300	100	-1064L	<b>NEW</b>	<b>NEW</b>	<b>NEW</b>
<b>M12</b>	12	100	-1064X	-	-
	16	100	-1068A	-	-
	20	100	-1070C	-	-
	25	100	-1072E	-	-8143B
	30	100	-1073F	-	-8143C
	35	100	-1074G	-	-8144A
	40	50	-1075H	-	-8144D
	45	50	-1076J	-	-8144E
	50	50	-1077K	-	-8145F
	55	50	-1078L	-	-8145T
	60	50	-1079M	-	-8146H
	65	50	-1080N	-4580A	-8146J
	70	50	-1081P	-	-
	75	50	-1082Q	-4581B	-
	80	50	-1083R	-	-8149A
	90	50	-1084S	-4582C	-
	100	50	-1085T	-	-8150G
	110	50	-1086V	-	-
	120	50	-1087W	-	-
	130	50	-1088X	-	-
140	50	-1089Y	-	-	
150	50	-1090Z	-	-	
160	50	-1092A	-	-	
180	50	-1093B	-	-	
200	50	-1094C	-	-	
220	50	-1094E	-	-	
240	50	-1094G	-	-	
260	50	-1094J	-	-	
300	50	-1094S	-	-	
<b>M14</b>	25	50	-1095D	-	-
	30	50	-1096E	-	-
	35	50	-1097F	-	-
	40	50	-1098G	-	-
	45	50	-1099H	-	-8163G
	50	50	-1100J	-	-
	55	50	-1101K	-	-
	60	50	-1102L	-	-
	65	50	-1103M	-	-
	70	50	-1104N	-	-
	75	50	-1105P	-	-
	80	50	-1106Q	-	-
	90	50	-1107R	-	-
	100	50	-	-	-
	110	50	-1109T	-	-
120	50	-1110V	-	-	
150	50	-1110Z	-	-	
<b>M16</b>	20	25	-1111E	-	-
	22	25	-	-	-
	25	25	-1112X	-	-6112X
	30	25	-1113Y	-	-6113Y
	35	25	-1114Z	-	-6114Z
	40	25	-1116A	-	-6116A
	45	25	-1117B	-	-
	50	25	-1118C	-	-6118C
	55	25	-1119D	-	-

**SOCKET HEAD CAP SCREWS**

**QUALFAST Socket Head Cap Screws - Metric**

High Grade Alloy Steel to **BS EN ISO 898/1 Grade 12.9.** Suitable for all high tensile applications. Maximum operating temperature (unplated): 300°C.



Thread Size	Dimensions (mm)		
	dk	k	S (hex)
<b>M16</b>	24.33	16.0	14.0
<b>M18</b>	27.00	18.0	16.0
<b>M20</b>	30.33	20.0	17.0
<b>M24</b>	36.00	24.0	20.0

Dimensions to **BS EN ISO 4762 DIN 912**

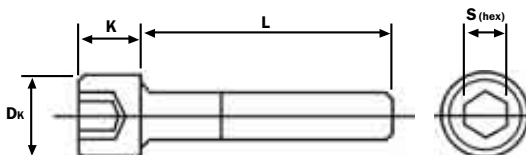
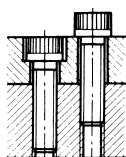
<b>M16 to M24</b>		<b>ISO Metric - Self Colour</b>		<b>ISO Metric - Self Colour</b>		<b>ISO Metric BZP</b>		<b>ISO Metric A2 Stainless</b>	
		<b>Standard (Self-Colour)</b>		<b>Thread to Head (Self-Colour)</b>		<b>Bright Zinc Plated (BZP)</b>		<b>A2 Stainless Steel</b>	
Size	L	Box Qty	Order Code QFT-600	Order Code QFT-600	Order Code QFT-600	Order Code QFT-600	Order Code QFT-600	Order Code QFT-600	Order Code QFT-600
<b>M16 cont.</b>	60	25	-1120E	-	-8176Q	-	-6120E		
	65	25	-1121F	-	-8177R	-	-6121F		
	70	25	-1122G	-	-8178S	-	-6122G		
	75	25	-1123H	-	-	-	-6123H		
	80	25	-1124J	-	-	-	-6124J		
	85	25	-1125A	-	-	-	-		
	90	25	-1125K	-	-	-	-6125K		
	100	25	-1126L	-	-	-	-6126L		
	110	25	-1127M	-	-	-	-		
	120	25	-1128N	-	-	-	-		
	130	25	-1129P	-	-	-	-6129P		
	140	25	-1130Q	-	-	-	-6130Q		
	150	25	-1131R	-	-	-	-		
	160	25	-1132S	-	-	-	-		
	180	25	-1133T	-	-	-	-		
	200	25	-1134V	-	-	-	-		
	220	25	-1134X	-	-	-	-		
	240	25	-1134Y	-	-	-	-		
250	25	-1136D	-	-	-	-			
260	25	-1136H	-	-	-	-			
280	25	-1134Z	-	-	-	-			
300	25	-1135W	-	-	-	-			
<b>M18</b>	50	25	-1140A	-	-	-	-		
	60	25	-1142C	-	-	-	-		
	70	25	-1144E	-	-	-	-		
	80	25	-1146G	-	-	-	-		
	90	25	-1147H	-	-	-	-		
	100	25	-1148J	-	-	-	-		
<b>M20</b>	30	25	-1151M	-	-	-	-6151M		
	40	25	-1153P	-	-	-	-6153P		
	45	25	-1154Q	-	-	-	-		
	50	25	-1155R	-	-	-	-6155R		
	55	25	-1156S	-	-	-	-6156S		
	60	25	-1157T	-	-	-8182F	-		
	65	25	-1158V	-	-	-8182T	-		
	70	25	-1159W	-	-	-	-6159W		
	75	25	-1160X	-	-	-	-		
	80	15	-1161Y	-	-	-	-		
	90	15	-1162Z	-	-	-	-		
	100	15	-1164A	-	-	-	-6164A		
	110	15	-1165B	-	-	-	-		
	120	15	-1166C	-	-	-	-		
	130	15	-1167D	-	-	-	-		
140	15	-1168E	-	-	-	-			
150	15	-1169F	-	-	-	-			
160	15	-1170G	-	-	-	-			
180	15	-1171H	-	-	-	-			
200	15	-1172J	-	-	-	-			
220	15	-1173K	-	-	-	-			
240	15	-1174L	-	-	-	-			
260	15	-1175M	-	-	-	-			
280	15	-1176N	-	-	-	-			
300	15	-1177P	-	-	-	-			
<b>M24</b>	40	15	-1180S	-	-	-	-		
	50	15	-1182V	-	-	-	-		
	60	15	-1184X	-	-	-	-		
	70	10	-1186Z	-	-	-	-		
	75	10	-1188A	-	-	-	-		
	80	10	-1189B	-	-	-	-6180M		
	90	10	-1190C	-	-	-	-		
	100	10	-1191D	-	-	-	-		
	110	10	-1192E	-	-	-	-		
	120	10	-1193F	-	-	-	-		
130	10	-1194G	-	-	-	-			
140	10	-1195H	-	-	-	-			
150	10	-1196J	-	-	-	-			
160	10	-1197K	-	-	-	-			
180	10	-1198L	-	-	-	-			

**FASTENERS**

**GROUP 600 SOCKET HEAD CAP SCREWS**

**QUALFAST Socket Head Cap Screws - Metric**

High Grade Alloy Steel to **BS EN ISO 898/1 Grade 12.9**. Suitable for all high tensile applications. Maximum operating temperature (unplated): 300°C.



Thread Size	Dimensions (mm)		
	dk	k	S (hex)
M24	36.00	24.0	20.0
M30	45.00	30.0	25.0

Dimensions to **BS EN ISO 4762 DIN 912**

**FASTENERS**

M24 to M30		ISO Metric Self Colour	ISO Metric - Self Colour	ISO Metric BZP	ISO Metric A2 Stainless
		<b>Standard (Self-Colour)</b>	<b>Thread to Head (Self-Colour)</b>	<b>Bright Zinc Plated (BZP)</b>	<b>A2 Stainless Steel</b>
Size	L	Box Qty	Order Code QFT-600	Order Code QFT-600	Order Code QFT-600
M24	200	10	-1199M	-	-
cont.	220	10	-1200N	-	-
	260	10	-1202Q	-	-
	300	10	-1204S	-	-
M30	80	10	-1207W	-	-
	90	10	-1208X	-	-
	100	10	-1209Y	-	-
	120	10	-1212A	-	-
	150	10	-1215D	-	-
	180	10	-1218G	-	-
	200	10	-1220J	-	-
	220	10	-1222L	-	-

**Socket Head Cap Screws - Low Head - Metric**

High Grade Alloy Steel to **BS EN ISO 898/1 Grade 10.9**. Suitable for all high tensile applications. Maximum operating temperature (unplated): 300°C. **DIN 7984**.

M4 to M20		ISO Metric - Self Colour		
		<b>NEW</b>		
Size	L	Box Qty	Order Code QFT-600	Order Code QFT-600
M4	8	200	-9000A	M10 15 100 -9090A
	10	200	-9001B	16 100 -9091B
	12	200	-9002C	20 100 -9092C
	15	200	-9003D	25 100 -9093D
	16	200	-9004E	30 100 -9094E
	20	200	-9005F	35 100 -9095F
	25	200	-9006G	M10 45 100 -9097H
	50	200	-9011M	50 100 -9098J
M5	8	200	-9020A	55 100 -9099K
	10	200	-9021B	M10 60 100 -9099N
	12	200	-9022C	70 100 -9100T
	14	200	-9023D	M12 20 100 -9110A
	16	200	-9025F	25 100 -9111B
	20	200	-9026G	30 100 -9112C
	25	200	-9027H	M12 35 100 -9113D
	30	200	-9028J	45 50 -9115E
M6	8	200	-9040A	50 50 -9116G
	10	200	-9041B	60 50 -9117H
	12	200	-9042C	70 50 -9118J
	14	200	-9043D	80 50 -9119K
	15	200	-9044E	100 50 -9125R
	16	200	-9045F	M16 30 25 -9130A
	20	200	-9046G	40 25 -9131B
	25	200	-9047H	50 25 -9132C
	30	200	-9048J	M16 60 25 -9134E
	35	200	-9049K	90 25 -9137H
	40	200	-9050L	100 25 -9139K
	50	200	-9052N	M20 40 25 -9156B
M8	12	200	-9070A	60 25 -9160F
	15	200	-9072C	
	16	200	-9073D	
	20	200	-9074E	
	25	200	-9075F	
	30	200	-9076G	
	35	200	-9077H	
	40	200	-9078J	
	50	100	-9079K	
	60	100	-9081M	

**QUALFAST Stainless Fastener Assortments**

**A2 Stainless Steel Socket Cap Screw Kit**  
**Contents:** 5 x 12, 5 x 16, 5 x 20, 6 x 12, 6 x 16, 6 x 20, 6 x 25, 8 x 16, 8 x 20 and 8 x 25.



Type	Average Quantity	Weight each	Order Code QFT-615
Metric	250	2.0kg	-4380K

**A2 Stainless Steel Socket Button Screw Kit**  
**Contents:** M5 x 12, M5 x 16, M5 x 20, M6 x 12, M6 x 16, M6 x 20, M6 x 25, M8 x 20, M8 x 25 and M8 x 30.

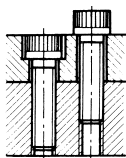


Type	Average Quantity	Weight each	Order Code QFT-615
Metric	310	-	-4420K

**SOCKET HEAD CAP SCREWS**

**QUALFAST Socket Head Cap Screws - Inch**

High Grade Alloy Steel to **BS EN ISO 898/1 Grade 12.9**. Suitable for all high tensile applications. Maximum operating temperature (unplated): 300°C.



**NEW**

Dimensions to **ANSI B 18.3 - 1936 Series**

Thread Size	Dimensions (mm)		
	dk	k	S (hex)
2	0.140"	0.108"	1/16"
4	0.183"	0.122"	5/64"
5	0.205"	0.125"	3/32"
6	0.226"	0.138"	3/32"
8	0.270"	0.164"	1/8"
10	0.312"	0.190"	5/32"
1/4"	0.375"	0.250"	3/16"
5/16"	0.437"	0.312"	7/32"

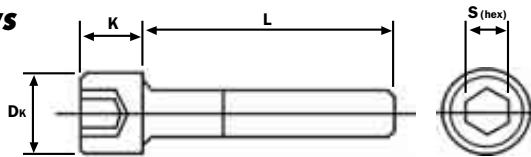
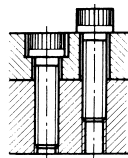
No.2 to 5/16	UNC - Self Colour	UNC A2 Stainless Steel	UNF - Self Colour	UNF A2 Stainless Steel
	Standard (Self-Colour)	Standard (Self-Colour)	Standard (Self-Colour)	Standard (Self-Colour)
Box Qty. 200	Order Code QFT-601	Order Code QFT-606	Order Code QFT-601	Order Code QFT-606
Size L				
2	1/4" -	-6510A	-	-
	1/2" -	-6511B	-	-
	3/8" -1301B	-	-	-
	1/2" -1303D	-6514H	-	-
	3/4" -1304E	-6514T	-	-
4	5/8" -1305F	-6515F	-	-
	3/4" -1306G	-6515R	-	-
	7/8" -1307H	-	-	-
	1" -	-6516B	-	-
	3/8" -1310L	-	-	-
5	1/2" -1311M	-	-	-
	3/4" -1315R	-6517G	-	-
	5/8" -1317T	-6517T	-	-
	1 1/2" -1318V	-6518G	-	-
	5/8" -1319W	-6518R	-	-
6	3/4" -1320X	-6519F	-	-
	1" -1322Z	-6519W	-	-6480Z
	1 1/2" -	-6520F	-	-
	1/4" -1327D	-	-	-
	3/8" -1328E	-6521G	-	-
	1/2" -1329F	-6521R	-	-
8	5/8" -1330G	-6522R	-	-
	3/4" -1331H	-6523B	-	-
	1" -1333K	-6525G	-	-
	1 1/4" -1334L	-	-	-
	1 1/2" -1335M	-6526E	-	-
	1/4" -1337P	-	-1553D	-
	3/8" -1338Q	-6529G	-1555F	-6488E
	1/2" -1339R	-6530A	-1556G	-6489F
	5/8" -1340S	-	-1557H	-
	3/4" -1341T	-6532C	-1558J	-6491H
	7/8" -1342V	-	-1559K	-
10	1" -1343W	-6533D	-	-6492J
	1 1/4" -1344X	-	-	-
	1 1/2" -1345Y	-	-	-6494L
	1 3/4" -1346Z	-	-1563P	-
	2" -1348A	-	-1564Q	-
	2 1/4" -	-	-1564R	-
	2 1/2" -	-	-1564T	-
	3/8" -1350C	-6539J	-1566S	-6496N
	1/2" -1351D	-6540A	-	-6497P
	5/8" -1352E	-6541B	-1568V	-
	3/4" -1353F	-6542C	-	-6499R
	7/8" -1354G	-	-	-
	1" -1355H	-6543D	-	-6500A
1/4	1 1/4" -1356J	-	-	-
	1 1/2" -1357K	-6545F	-	-6501B
	1 3/4" -1358L	-	-	-
	2" -1359M	-6547F	-1576C	-
	2 1/4" -1360N	-	-1577D	-
	2 1/2" -1361P	-	-1578E	-
	3" -1363R	-	-	-
	1/2" -1365T	-6548E	-1579F	-6502C
	5/8" -1366V	-	-1580G	-
	3/4" -1367W	-6549A	-1581H	-
	7/8" -1368X	-	-1582J	-
	1" -1369Y	-6549G	-1583K	-6503D
	1 1/4" -1370Z	-6550G	-	-
	1 1/2" -1372A	-6551H	-1585M	-
5/16	1 3/4" -1373B	-	-1586N	-
	2" -1374C	-6553K	-1587P	-
	2 1/4" -1375D	-	-1588Q	-
	2 1/2" -1376E	-6555M	-1589R	-
	2 3/4" -1377F	-	-	-
	3" -1378G	-	-	-
	3 1/2" -1379H	-	-	-
	4" -1380J	-	-	-

**FASTENERS**

**GROUP 600 SOCKET HEAD CAP SCREWS**

**QUALFAST Socket Head Cap Screws - Inch**

High Grade Alloy Steel to **BS EN ISO 898/1 Grade 12.9**. Suitable for all high tensile applications. Maximum operating temperature (unplated): 300°C.



**NEW**

Dimensions to **ANSI B 18.3 - 1936 Series**

Thread Size	Dimensions (mm)		
	dk	k	S (hex)
3/8"	0.562"	0.375"	5/16"
7/16"	0.656"	0.500"	3/8"
1/2"	0.750"	0.500"	3/8"
5/8"	0.865"	0.620"	1/2"
3/4"	0.990"	0.745"	9/16"
7/8"	1.312"	0.875"	3/4"
1"	1.312"	1.000"	5/8"

**FASTENERS**

<b>3/8 to 1</b>		<b>UNC - Self Colour</b>	<b>UNC A2 Stainless Steel</b>	<b>UNF Self Colour</b>	<b>UNF A2 Stainless Steel</b>
Size	L	Box Qty	Order Code	Order Code	Order Code
			<b>Standard (Self-Colour)</b>	<b>Standard (Self-Colour)</b>	<b>A2 Stainless Steel</b>
			<b>QFT-601</b>	<b>QFT-601</b>	<b>QFT-606</b>
1/2"		100	-1381K	-	-
5/8"		100	-1382L	-	-
3/4"		100	-1383M	-6558E	-6505F
7/8"		100	-	-	-
1"		100	-1385P	-6560G	-
1 1/4"		100	-1386Q	-6561H	-
1 1/2"		100	-1387R	-6562J	-6507H
1 3/4"		50	-1388S	-	-
2"		50	-1389T	-6564L	-
3/8	2 1/4"	50	-1390V	-	-
	2 1/2"	50	-1391W	-6566N	-
	2 3/4"	50	-1392X	-	-
	3"	50	-1393Y	-	-
	3 1/4"	50	-1394Z	-	-
	3 1/2"	50	-1396A	-	-
	4"	50	-1397B	-	-
	4 1/2"	50	-1398C	-	-
	5"	50	-1399D	-	-
	1"	50	-1401F	-	-1606J
	1 1/4"	50	-1402G	-	-1607K
7/16	1 1/2"	50	-1403H	-	-1608L
	1 3/4"	50	-1404J	-	-1609M
	2"	50	-1405K	-	-1610N
	2 1/2"	50	-1407M	-	-
	3/4"	50	-1408N	-	-
	1"	50	-1410Q	-	-1613R
	1 1/4"	50	-1411R	-	-1614S
	1 1/2"	50	-1412S	-6573T	-1615T
	1 3/4"	50	-1413T	-	-1616V
	2"	50	-1414V	-6575F	-1617W
	2 1/4"	25	-1415W	-	-1618X
1/2	2 1/2"	25	-1416X	-	-1619Y
	2 3/4"	25	-1417Y	-	-
	3"	25	-1418Z	-6577H	-1622A
	3 1/2"	25	-1421B	-	-1623B
	4"	25	-1422C	-	-1624C
	4 1/2"	25	-1423D	-	-
	5 1/2"	25	-1425F	-	-
	6"	25	-1426G	-	-
	1 1/4"	25	-1429K	-	-1625D
	1 1/2"	25	-1430L	-	-1626E
	1 3/4"	25	-1431M	-	-
	2"	25	-1433P	-	-1628G
	2 1/4"	25	-1434Q	-	-
5/8	2 1/2"	25	-1435R	-	-1630J
	2 3/4"	25	-1436S	-	-
	3"	25	-1437T	-	-1631K
	3 1/4"	25	-1438V	-	-
	3 1/2"	25	-1439W	-	-
	4"	25	-1440X	-	-1633B
	5"	25	-1442Z	-	-
	1 1/2"	25	-1452J	-	-
	2"	25	-1454L	-	-1635P
	2 1/4"	25	-1455M	-	-
	1 1/2"	25	-1456N	-	-1642C
3/4	2 3/4"	25	-1457P	-	-
	3"	25	-1458Q	-	-1644E
	3 1/2"	25	-1460S	-	-
	4"	25	-1461T	-	-
	5"	25	-1463W	-	-
	6"	25	-1464X	-	-
1	2"	10	-1496E	-	-
	4"	10	-1498G	-	-

**QUALFAST Socket Set Screws**

High tensile alloy steel. **Grade 14.9.**

**Plain Cup DIN916**

For use against hardened shafts. Ideal for use in ductile castings such as zinc, aluminium etc. where high tightening torques are not practical.

Thread Size	S (hex)
M2	1.0
M2.5	1.0
M3	1.5
M4	2.0
M5	2.5
M6	3.0
M8	4.0
M10	5.0
M12	6.0
M16	8.0
M24	12.0

**ISO Metric A2 Stainless**



**M2 to M24**

Size	L	Box Qty	Order Code
<b>QFT-606</b>			
M2	3	200	-8010A
	12	200	-8016G
M2.5	3	200	-8023B
	6	200	-8026E
M3	4	200	-8028G
	3	200	-8077D
M4	4	200	-8080G
	5	200	-8083K
M5	6	200	-8088Q
	8	200	-8093W
M6	10	200	-8099B
	12	200	-8104G
M8	16	200	-8114S
	4	200	-8119Y
M10	5	200	-8123B
	6	200	-8128G
M12	8	200	-8133M
	10	200	-8138S
M16	12	200	-8143Y
	16	200	-8154J
M20	20	200	-8159P
	25	200	-8164V
M24	30	200	-8165W
	5	200	-8166X
M5	6	200	-8170A
	8	200	-8175F
M6	10	200	-8180L
	12	200	-8185R
M8	16	200	-8196C
	20	200	-8201H
M10	25	200	-8206N
	30	200	-8211T
M12	35	200	-8212V
	6	200	-8214X
M16	8	200	-8219B
	10	200	-8224G
M20	12	200	-8225H
	16	200	-8239Y
M24	20	200	-8245D
	25	200	-8250J
M3	30	200	-8255P
	35	200	-8260V
M4	40	200	-8266A
	45	200	-8271F
M5	8	200	-8280Q
	10	200	-8285W
M6	12	200	-8291B
	16	200	-8301M
M8	20	200	-8306S
	25	200	-8311Y
M10	30	200	-8317D
	35	200	-8322J
M12	40	200	-8327P
	50	200	-8338A
M16	10	200	-8343F
	12	200	-8348L
M20	16	200	-8358X
	20	200	-8364C
M24	25	200	-8369H
	40	200	-8384Z
M3	50	200	-8395K
	12	200	-8399P
M4	16	200	-8410A
	20	200	-8415F
M5	25	200	-8420L
	30	200	-8425R

**Knurled Cup**

High tensile alloy steel. **Grade 14.9. DIN 916**

For quick and permanent location of pulleys, collars and gears on shafts. Will hold fast even in poorly tapped holes. Interrupted profile of clamping face resists loosening due to vibration. Sizes above M6 are generally counterbored to provide maximum clamping efficiency.

**ISO Metric - Self Colour**

Thread Size	S (hex)
M3	1.5
M5	2.0
M6	2.5
M8	3.0
M10	5.0
M12	6.0
M16	8.0
M20	10.0
M24	12.0



**M3 to M24**

Size	L	Box Qty	Order Code
<b>QFT-602</b>			
M3	3	200	-3077D
	4	200	-3080G
	5	200	-3083K
	6	200	-3088Q
	8	200	-3093W
M4	10	200	-3099B
	12	200	-3104G
	16	200	-3114S
	4	200	-3119Y
	5	200	-3123B
M5	6	200	-3128G
	8	200	-3133M
	10	200	-3138S
	12	200	-3143Y
	16	200	-3154J
M6	20	200	-3159P
	25	200	-3164V
	30	200	-3166X
	6	200	-3170A
	8	200	-3175F
M8	10	200	-3180L
	12	200	-3185R
	15	200	-3190X
	16	200	-3196C
	20	200	-3201H
M10	25	200	-3206N
	30	200	-3211T
	5	200	-3216G
	6	200	-3219B
	8	200	-3224G
M12	10	200	-3229M
	15	200	-3234S
	16	200	-3239Y
	20	200	-3245D
	25	200	-3250J
M16	30	200	-3255P
	35	200	-3260V
	40	200	-3266A
	45	200	-3271F
	50	200	-3275K
M20	8	200	-3280Q
	10	200	-3285W
	12	200	-3291B
	15	200	-3296G
	16	200	-3301M
M24	20	200	-3306S
	25	200	-3311Y
	30	200	-3317D
	35	200	-3322J
	40	200	-3327P
M3	45	200	-3332V
	50	200	-3338A
	10	200	-3343F
	12	200	-3348L
	15	200	-3353R
M4	16	200	-3358X
	20	200	-3364C
	25	200	-3369H
	30	200	-3374N
	35	200	-3379T
M5	40	200	-3384Z
	45	200	-3390E
	50	200	-3395K

Size	L	Box Qty	Order Code
<b>QFT-602</b>			
M6	6	200	-3214X
	8	200	-3219B
	10	200	-3224G
	12	200	-3229M
	15	200	-3234S
M8	16	200	-3239Y
	20	200	-3245D
	25	200	-3250J
	30	200	-3255P
	35	200	-3260V
M10	40	200	-3266A
	45	200	-3271F
	50	200	-3275K
	8	200	-3280Q
	10	200	-3285W
M12	12	200	-3291B
	15	200	-3296G
	16	200	-3301M
	20	200	-3306S
	25	200	-3311Y
M16	30	200	-3317D
	35	200	-3322J
	40	200	-3327P
	45	200	-3332V
	50	200	-3338A
M20	50	200	-3343F
	12	200	-3348L
	15	200	-3353R
	16	200	-3358X
	20	200	-3364C
M24	25	200	-3369H
	30	200	-3374N
	35	200	-3379T
	40	200	-3384Z
	45	200	-3390E
50	200	-3395K	

Size	L	Box Qty	Order Code
<b>QFT-602</b>			
M12	12	200	-3399P
	16	200	-3410A
	20	200	-3415F
	25	200	-3420L
	30	200	-3425R
M16	35	200	-3430X
	40	200	-3436C
	45	200	-3441H
	50	200	-3446N
	60	200	-3456Z
M20	16	200	-3461D
	20	200	-3466J
	25	200	-3471P
	30	200	-3476V
	35	200	-3482A
M24	40	200	-3487F
	50	200	-3497R
	60	200	-3508C
	20	200	-3513H
	25	200	-3518N
M3	40	200	-3529B
	50	200	-3544Q
	60	200	-3555B
	25	200	-3560G
	30	200	-3565M
M4	40	200	-3578A
	50	200	-3587K
	60	200	-3596V

**UNC - Self Colour**

High tensile alloy steel. **Grade 14.9. BS 2470.**

Thread Size	S (hex)	Thread Size	S (hex)
No. 4	.050"	1/4"	1/8"
No. 6	1/16"	5/16"	5/32"
No. 8	5/64"	3/8"	3/16"
No. 10	3/32"	1/2"	1/4"
		5/8"	5/16"



**No. 4 to 5/8"**

Size	L	Order Code
<b>QFT-603</b>		
4	1/8"	-3708J
	3/16"	-3709K
	1 3/4"	-3712N
	5/16"	-3713P
	1/2"	-3716S
6	1/8"	-3728E
	3/16"	-3731H
	1/4"	-3734L
	1/2"	-3736N
	1/8"	-3748A
8	3/16"	-3749B
	1/4"	-3753F
	3/8"	-3762Q
	1/2"	-3764S
	1/4"	-3774C
10	3/8"	-3780J
	1/2"	-3783M
	3/4"	-3786Q
	1"	-3790V

**UNF - Self Colour**

**NEW**

**No. 10 to 5/8"**

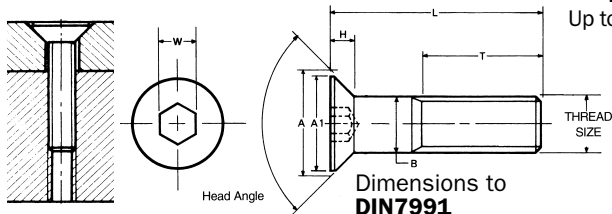
Size	L	Order Code
<b>QFT-603</b>		
1/4"	1/4"	-3792X
	5/16"	-3797B
	3/8"	-3800E
	1/2"	-3805K
	5/8"	-3810Q
5/16"	3/4"	-3813T
	1"	-3816X
	3/8"	-3827H
	1/4"	-3825F
	5/16"	-3826G
3/8"	1/2"	-3833P
	3/4"	-3839W
	1"	-3842Z
	3/8"	-3852J
	5/8"	-3859R
1/2"	1/2"	-3857P
	3/4"	-3862V
	1"	-3868A
	1 1/4"	-3872E
	1 1/2"	-3874G
5/8"	2"	-3878M
	1/2"	-3888X
	5/8"	-3890Z
	3/4"	-3893B
	1"	-3897F
1"	1 1/4"	-3901K
	1 1/2"	-3902L
	2"	-3904N
	5/8"	-3908S
	3/4"	-3909T
1 1/4"	1"	-3910V

Size	L	Order Code
<b>QFT-603</b>		
10	1/4"	-4020X
	5/16"	-4022Z
	3/8"	-4024B
	1/2"	-4030G
	3/4"	-4032J
1/4"	1"	-4034L
	1/4"	-4037P
	5/16"	-4040S
	3/8"	-4042V
	1/2"	-4049B
5/16"	5/8"	-4050C
	3/4"	-4051D
	1"	-4054G
	1/4"	-4056J
	3/8"	-4059M
3/8"	1/2"	-4063R
	5/8"	-4065T
	3/4"	-4066V
	1"	-4068X
	3/8"	-4074C
1/2"	1/2"	-4077F
	5/8"	-4078G
	3/4"	-4081K
	1"	-4083M
	1 1/4"	-4084N
5/8"	1/2"	-4087R
	5/8"	-4088S
	3/4"	-4089T
	1"	-4093Y
	5/8"	-4096A
1"	-4100F	

**GROUP 604 SOCKET HEAD COUNTERSUNK SCREWS**

**QUALFAST Socket Head Countersunk Screws**




High Grade Alloy Steel to **BS EN ISO 898/1 Grade 10.9**. Suitable for all high tensile applications. Maximum operating temperature (unplated): 300°C. For applications that require a flush finished surface. Precisely controlled countersink angle allows maximum flushness and sidewall contact.



A = Maximum theoretical sharp corner.  
**Inclined angle under head:**  
 Up to M20 = 90° Above M20 = 60°

Thread Size	Dimensions (mm)		
	A	H	W (hex)
M2.5	5.00	1.00	1.5
M3	6.72	1.86	2.0
M4	8.96	2.48	2.5
M5	11.20	3.10	3.0
M6	13.44	3.72	4.0
M8	17.92	4.96	5.0

FASTENERS

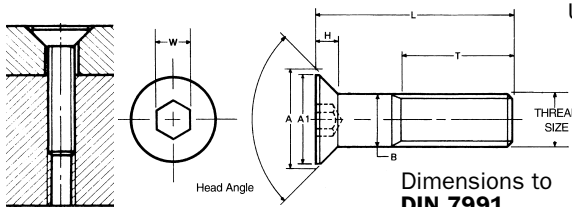
		ISO Metric - Self Colour		ISO Metric BZP		ISO Metric A2 Stainless	
				 <b>NEW</b>		 <b>NEW</b>	
Size	L	Box Qty	Order Code	Order Code	Order Code	Order Code	Order Code
		Standard (Self-Colour)		Bright Zinc Plated (BZP)		A2 Stainless Steel	
		QFT-604		QFT-604		QFT-606	
M2.5	5	200	-	-	-	-	-
M2.5	6	200	-	-	-	-	-
M2.5	12	200	-	-	-	-	-
M3	6	200	-2020A	-0400A	-	-7020A	
M3	8	200	-2021B	-	-	-7021B	
M3	10	200	-2022C	-0400C	-	-7022C	
M3	12	200	-2023D	-0400D	-	-7023D	
M3	15	200	-2024E	-	-	-	
M3	16	200	-2025F	-0400G	-	-7025F	
M3	18	200	-2026G	-	-	-	
M3	20	200	-2027H	-	-	-7027H	
M3	25	200	-2028J	-	-	-7028J	
M3	30	200	-2029K	-	-	-7029K	
M4	6	200	-	-	-	-7030A	
M4	8	200	-2030L	-0403B	-	-7030L	
M4	10	200	-2031M	-0403C	-	-7031M	
M4	12	200	-2032N	-0403D	-	-7032N	
M4	15	200	-2033P	-	-	-	
M4	16	200	-2034Q	-0403R	-	-7033P	
M4	18	200	-2035R	-	-	-	
M4	20	200	-2036S	-0404E	-	-7034Q	
M4	25	200	-2037T	-0405F	-	-7037T	
M4	30	200	-2038V	-0406G	-	-7038V	
M4	35	200	-2039W	-	-	-7039W	
M4	40	200	-2040X	-	-	-7040X	
M4	45	200	-2040Z	-	-	-	
M4	50	200	-2041D	-	-	-	
M5	8	200	-2041Y	-0599Z	-	-7042Y	
M5	10	200	-2042Z	-0600A	-	-7043Z	
M5	12	200	-2044A	-0601B	-	-7044A	
M5	14	200	-2044W	-	-	-	
M5	15	200	-2045B	-	-	-	
M5	16	200	-2046C	-0603D	-	-7046C	
M5	18	200	-2047D	-	-	-	
M5	20	200	-2048E	-0604E	-	-7048E	
M5	25	200	-2049F	-0605F	-	-7049F	
M5	30	200	-2050G	-0606G	-	-7050G	
M5	35	200	-2051H	-	-	-7051H	
M5	40	200	-2052J	-0607H	-	-7052J	
M5	45	200	-2053K	-	-	-	
M5	50	200	-2054L	-0608J	-	-7054L	
M5	60	200	-2054N	-0609K	-	-7055M	
M5	80	200	-	-	-	-7055T	
M6	8	200	-2055M	-	-	-7056N	
M6	10	200	-2056N	-0700A	-	-	
M6	12	200	-2057P	-0700B	-	-7057P	
M6	14	200	-2058M	-	-	-	
M6	15	200	-2058Q	-	-	-	
M6	16	200	-2059R	-0703D	-	-7059R	
M6	18	200	-2060S	-	-	-	
M6	20	200	-2061T	-0705F	-	-7061T	
M6	25	200	-2062V	-0706G	-	-7062V	
M6	30	200	-2063W	-0707H	-	-7063W	
M6	35	200	-2064X	-0708J	-	-7064X	
M6	40	200	-2065Y	-0709K	-	-7065Y	
M6	45	200	-2066Z	-0710L	-	-7066Z	
M6	50	200	-2068A	-0711M	-	-7068A	
M6	55	200	-2068F	-	-	-	
M6	60	200	-2068N	-0712N	-	-7069B	
M6	70	200	-2068Q	-	-	-7070C	
M6	75	200	-2068X	-	-	-7070P	
M8	10	200	-2069B	-	-	-	
M8	12	200	-2070C	-0800A	-	-	
M8	15	200	-2071D	-	-	-	
M8	16	200	-2072E	-0801B	-	-7072E	
M8	18	200	-2073F	-	-	-	
M8	20	200	-2074G	-0802C	-	-7074G	
M8	25	200	-2075H	-0803D	-	-7075H	
M8	30	200	-2076J	-0804E	-	-7076J	
M8	35	200	-2077K	-0805F	-	-7077K	

**CONTINUED ON NEXT PAGE...**

**SOCKET HEAD COUNTERSUNK SCREWS**

**QUALFAST Socket Head Countersunk Screws**

High Grade Alloy Steel to **BS EN ISO 898/1 Grade 10.9**. Suitable for all high tensile applications. Maximum operating temperature (unplated): 300°C. For applications that require a flush finished surface. Precisely controlled countersink angle allows maximum flushness and sidewall contact.



A = Maximum theoretical sharp corner.  
**Inclined angle under head:**  
 Up to M20 = 90° Above M20 = 60°

Thread Size	Dimensions (mm)		
	A	H	W (hex)
M8	17.92	4.96	5.0
M10	22.40	6.20	6.0
M12	26.88	7.44	8.0
M14	XX.XX	X.XX	XX.X
M16	33.60	8.80	10.0
M20	40.32	9.48	12.0

M8 to M20	ISO Metric - Self Colour			ISO Metric BZP			ISO Metric A2 Stainless			
	Size	Box Qty	Order Code	Size	Box Qty	Order Code	Size	Box Qty	Order Code	
			<b>QFT-604</b>			<b>QFT-604</b>			<b>QFT-606</b>	
M8 cont.	40	200	-2078L			-0806G			-7078L	
	45	200	-2079M			-0807H			-7079M	
	50	200	-2080N			-0808J			-7080N	
	55	100	-2081P			-			-	
	60	100	-2082Q			-0810L			-7082Q	
	65	100	-			-			-7083R	
	70	100	-2083R			-0812M			-7084S	
	80	50	-2083V			-0814P			-7085G	
	90	10	-2083T			-			-	
	95	10	-2083W			-			-	
100	10	-2083Z			-			-7086H		
M10	12	200	-2084S			-			-	
	15	200	-2085T			-			-	
	16	200	-2086V			-0899B			-7086V	
	18	200	-			-			-	
	20	200	-2088X			-0900A			-7087W	
	25	200	-2089Y			-0901B			-7089Y	
	30	200	-2090Z			-0902C			-7090Z	
	35	200	-2092A			-0903D			-7092A	
	40	100	-2093B			-0904E			-7093B	
	45	100	-2094C			-0905F			-7093C	
M10 cont.	50	100	-2095D			-0906G			-7094C	
	55	100	-2096E			-0907H			-	
	60	100	-2097F			-0908J			-7095D	
	65	50	-2098A			-			-	
	70	50	-2098G			-0910L			-	
	75	50	-2099B			-0911M			-	
	80	50	-2099H			-			-7097F	
	90	50	-2100J			-			-	
	100	50	-2101K			-			-	
	110	50	-2101L			-			-	
120	50	-			-			-		
M12	16	100	-			-			-	
	20	100	-2102L			-1000A			-7102L	
	25	100	-2103M			-1001B			-7103M	
	30	100	-2104N			-1002C			-7104N	
	35	100	-2105P			-1003D			-7105P	
	40	100	-2106Q			-1004E			-7106Q	
	45	50	-2107R			-1005F			-7107R	
	50	50	-2108S			-1006G			-7108S	
	55	50	-2109T			-			-	
	60	50	-2110V			-1008J			-7110V	
M12 cont.	65	50	-2111D			-			-	
	70	50	-2111W			-			-	
	75	50	-2112F			-			-7112L	
	80	50	-2112X			-1012P			-7112X	
	90	50	-2113Y			-1014R			-7113Y	
	100	50	-2114Z			-			-	
	120	50	-2115R			-			-	
	M14	35	50	-2116D			-			-
		40	50	-2116G			-			-
		50	50	-2117J			-			-
30		50	-2118C			-1230G			-	
35		50	-2119D			-			-	
40		50	-2120E			-1232J			-	
45		50	-2121F			-1232K			-	
50		50	-2122G			-1233K			-	
55		25	-2123H			-			-	
M16		60	25	-2124J			-1234L			-
	70	25	-2125K			-			-	
	75	25	-2126A			-			-	
	80	25	-2126L			-			-	
	90	25	-2127M			-			-	
	100	25	-2128N			-			-	
	120	25	-2130Q			-			-	
	M20	40	25	-2137Y			-			-
		45	25	-2138Z			-			-
		50	25	-2139A			-			-
55		25	-2141F			-			-	
60		25	-2142C			-			-	
70		25	-2143D			-			-	
80		25	-2144E			-			-	
90		25	-2145F			-			-	
100		25	-2146G			-			-	

**PRODUCTS ARE ONLY AVAILABLE VIA YOUR DISTRIBUTOR**

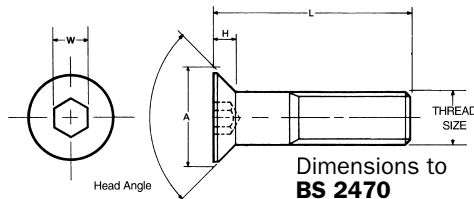
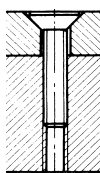
**FASTENERS**

© 2011

**GROUP 604 SOCKET HEAD COUNTERSUNK SCREWS**

**QUALFAST Socket Head Countersunk Screws - Inch - Self Colour**

High Grade Alloy Steel to **BS EN ISO 898/1 Grade 10.9**. Suitable for all high tensile applications. Maximum operating temperature (unplated); 300°C. For applications that require a flush finished surface. Precisely controlled countersink angle allows maximum flushness and sidewall contact.



A = Maximum theoretical sharp corner.

**Inclined angle under head:**  
Up to M20 = 91°/89°

**UNC, UNF**

Thread Size	Dimensions (mm)		
	A	H	W (hex)
4	.255	.083	1/16"
6	.307	.097	5/64"
8	.359	.112	3/32"
10	.411	.127	1/8"
1/4"	.531	.161	5/32"
5/16"	.656	.198	3/16"
3/8"	.781	.234	7/32"
1/2"	.938	.251	5/16"

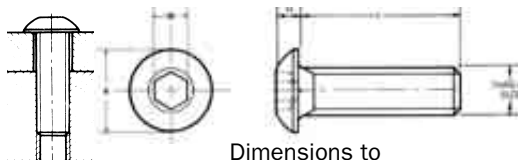
**FASTENERS**

No. 2 to 1/2"		UNC		UNC		UNF		UNF	
Size	L	Box Qty	Order Code	Order Code	Order Code	Order Code	Order Code	Order Code	Order Code
			<b>Standard (Self-Colour)</b>	<b>A2 Stainless Steel</b>		<b>Standard (Self-Colour)</b>	<b>A2 Stainless Steel</b>		
			<b>QFT-605</b>	<b>QFT-606</b>	<b>QFT-605</b>	<b>QFT-605</b>	<b>QFT-606</b>	<b>QFT-605</b>	<b>QFT-606</b>
2	1/4"	100	-	<b>-7500A</b>	-	-	-	-	-
	1/4"	100	<b>-2204E</b>	<b>-7530A</b>	-	-	-	-	-
	3/8"	100	<b>-2205F</b>	<b>-7531B</b>	-	-	-	-	-
4	1/2"	100	<b>-2206G</b>	<b>-7532C</b>	-	-	-	-	-
	3/4"	100	<b>-2207H</b>	-	-	-	-	-	-
	1/4"	100	<b>-2213P</b>	<b>-7570A</b>	-	-	-	-	-
	3/8"	100	<b>-2214Q</b>	<b>-7572C</b>	-	-	-	-	-
	1/2"	100	<b>-2215R</b>	<b>-7573D</b>	-	-	-	-	-
	3/4"	100	<b>-2216S</b>	-	-	-	-	-	-
	3/8"	100	<b>-2218V</b>	<b>-7591B</b>	-	-	-	-	-
	1/2"	100	<b>-2219W</b>	<b>-7592C</b>	-	-	-	-	-
	5/8"	100	<b>-2220G</b>	-	-	-	-	-	-
	3/4"	100	<b>-2220X</b>	<b>-7593D</b>	-	-	-	-	-
	1"	100	<b>-2221Y</b>	<b>-7594E</b>	-	-	-	-	-
	1 1/4"	100	-	<b>-7595F</b>	-	-	-	-	-
	3/8"	100	<b>-2224A</b>	<b>-7610A</b>	<b>-2382C</b>	<b>-7700A</b>	-	-	-
	1/2"	100	<b>-2225B</b>	<b>-7611B</b>	<b>-2383D</b>	<b>-7701B</b>	-	-	-
	5/8"	100	<b>-2226C</b>	-	<b>-2384E</b>	-	-	-	-
	3/4"	100	<b>-2227D</b>	<b>-7612C</b>	<b>-2385F</b>	<b>-7702C</b>	-	-	-
	1"	100	<b>-2229F</b>	-	<b>-2386G</b>	<b>-7703D</b>	-	-	-
	1 1/2"	100	-	<b>-7614E</b>	-	-	-	-	-
	1/4"	100	<b>-2239R</b>	-	-	-	-	-	-
	3/8"	100	<b>-2231H</b>	-	-	-	-	-	-
	1/2"	100	<b>-2232J</b>	<b>-7630A</b>	<b>-2390L</b>	<b>-7705F</b>	-	-	-
	5/8"	100	<b>-2233K</b>	-	<b>-2391M</b>	-	-	-	-
	3/4"	100	<b>-2234L</b>	<b>-7632C</b>	<b>-2392N</b>	<b>-7706G</b>	-	-	-
	1"	100	<b>-2235M</b>	<b>-7633D</b>	<b>-2393P</b>	-	-	-	-
	1 1/4"	100	<b>-2236N</b>	-	-	-	-	-	-
	1 1/2"	100	<b>-2237P</b>	<b>-7634E</b>	<b>-2394Q</b>	<b>-7708J</b>	-	-	-
	1/2"	100	<b>-2241T</b>	-	-	-	-	-	-
	5/8"	100	<b>-2242V</b>	-	-	-	-	-	-
	3/4"	100	<b>-2243W</b>	<b>-7641B</b>	<b>-2397T</b>	-	-	-	-
	1"	100	<b>-2245Y</b>	<b>-7642C</b>	<b>-2399W</b>	-	-	-	-
	1 1/4"	100	<b>-2246Z</b>	-	<b>-2400X</b>	-	-	-	-
	1 1/2"	100	<b>-2248A</b>	-	<b>-2401Y</b>	-	-	-	-
	2"	100	<b>-2250C</b>	-	-	-	-	-	-
	2 1/2"	100	<b>-2252E</b>	-	-	-	-	-	-
	3/4"	100	<b>-2254G</b>	<b>-7651B</b>	<b>-2404A</b>	-	-	-	-
	1"	100	<b>-2256J</b>	<b>-7652C</b>	<b>-2405B</b>	-	-	-	-
	1 1/4"	100	<b>-2257K</b>	-	<b>-2406C</b>	-	-	-	-
	1 1/2"	100	<b>-2258L</b>	<b>-7653D</b>	<b>-2407D</b>	<b>-7715R</b>	-	-	-
	2"	100	<b>-2260A</b>	-	-	-	-	-	-
	2 1/2"	100	<b>-2261P</b>	-	-	-	-	-	-
	3/4"	100	<b>-2266V</b>	-	-	-	-	-	-
	1"	100	<b>-2267W</b>	-	<b>-2411H</b>	-	-	-	-
	1 1/4"	50	<b>-2268X</b>	-	<b>-2412J</b>	-	-	-	-
	1 1/2"	50	<b>-2269Y</b>	-	<b>-2413K</b>	-	-	-	-
	1 3/4"	50	<b>-2270B</b>	-	<b>-2415M</b>	-	-	-	-
	2"	50	<b>-2270Y</b>	-	-	-	-	-	-
	2 1/2"	50	-	-	-	-	-	-	-
	3"	50	<b>-2271L</b>	-	-	-	-	-	-

**SOCKET HEAD BUTTON SCREWS**

**QUALFAST Socket Head Button Screws**

High Grade Alloy Steel to **BS EN ISO 898/1 Grade 10.9**. Suitable for all high tensile applications. Maximum operating temperature (unplated): 300°C. For materials that are too thin to countersink. Low head profile for a smooth finished appearance. Also suitable for non-critical loading requiring heat treated fasteners.



Dimensions to **BS EN ISO 7380**

Thread Size	Dimensions (mm)		
	A	H	W (hex)
M3	5.50	1.5	2.0
M4	7.60	2.2	2.5
M5	9.50	2.8	3.0
M6	10.50	3.3	4.0
M8	14.00	4.4	5.5
M10	17.30	5.4	6.0
M12	20.70	6.4	8.0

		ISO Metric - Self Colour		ISO Metric BZP		ISO Metric A2 Stainless	
		Standard (Self-Colour)		Bright Zinc Plated (BZP) <b>NEW</b>		A2 Stainless Steel <b>NEW</b>	
Size	L	Box Qty	Order Code QFT-604	Order Code QFT-604		Order Code QFT-606	
M3	5	200	-0198X	-4009Z		-	-
	6	200	-0200A	-4100A		-5529M	
	8	200	-0201B	-4100C		-5529T	
	10	200	-0202C	-4100E		-5530A	
	12	200	-0203D	-4100G		-5530J	
	16	200	-0206G	-		-5531K	
	20	200	-0206T	-		-5531P	
25	200	-0207B	-		-5531T		
30	200	-0207D	-		-5531W		
M4	6	200	-0207F	-4100X		-5532D	
	8	200	-0207H	-4100Z		-5532T	
	10	200	-0208J	-4101B		-5532Y	
	12	200	-0209K	-4102C		-5533G	
	15	200	-0211M	-		-	
	16	200	-0212N	-4103D		-5533R	
	20	200	-0212T	-4104E		-5534B	
	25	200	-0212V	-4106G		-5534G	
	30	200	-0212X	-4107H		-5534K	
	35	200	-0212Y	-		-	
40	200	-0212Z	-4109K		-5534R		
M5	6	200	-0213E	-		-	
	8	200	-0213L	-4196F		-5535G	
	10	200	-0213P	-4200A		-5535H	
	12	200	-0214Q	-4201B		-5535R	
	15	200	-0216S	-		-	
	16	200	-0217T	-4202C		-5535Y	
	18	200	-0217W	-		-	
	20	200	-0219W	-4203D		-5536G	
	22	200	-0220X	-		-5536R	
	25	200	-0221Y	-4204E		-5536Y	
	30	200	-0222Q	-4205F		-	
35	200	-0222T	-		-5537B		
40	200	-0223A	-		-5537H		
50	200	-0223C	-		-5537T		
M6	8	200	-0223D	-4298Z		-5537X	
	10	200	-0224A	-4300A		-5538A	
	12	200	-0225B	-4301B		-5538F	
	15	200	-0227D	-		-	
	16	200	-0228E	-4302C		-5538R	
	18	200	-0229F	-		-	
	20	200	-0230G	-4303D		-5539D	
	25	200	-0232J	-4304E		-5539K	
	30	200	-0233K	-4305F		-5539T	
	35	200	-0233M	-4306G		-5539V	
	40	200	-0233Q	-4307H		-5539W	
	45	200	-0233T	-		-	
	50	200	-0233X	-4308J		-5539Z	
	60	200	-	-4309K		-	
70	200	-	-4311M		-		
M8	10	200	-0234L	-4315R		-	
	12	200	-0235M	-4400A		-5543J	
	15	200	-0237P	-		-5544A	
	16	200	-0238Q	-4401B		-5544K	
	20	200	-0240S	-4402C		-5545A	
	25	200	-0242V	-4403D		-5545R	
	30	200	-0243W	-4404E		-5546B	
	35	200	-0244X	-4405F		-5546K	
	40	200	-0245Y	-4406G		-5547C	
	45	200	-0246B	-		-5548D	
	50	200	-0246H	-4408J		-5549E	
	60	200	-0246Z	-4409K		-5551G	
	70	200	-	-		-5552H	
80	200	-	-		-5553J		
M10	12	200	-	-		-5586M	
	16	200	-0249B	-		-5587N	
	20	200	-0251D	-4502C		-5588P	
	25	200	-0253F	-4503D		-5590A	
	30	200	-0254G	-4504E		-5591B	
	35	200	-0255H	-4505G		-5592C	
	40	100	-0256J	-4506H		-5593D	
	45	100	-0257B	-		-	
	50	100	-0257L	-		-5594E	
60	100	-0257N	-4509L		-		
70	100	-0257T	-		-		
M12	16	100	-0259M	-		-	
	20	100	-0261P	-4602C		-5598W	
	25	100	-0263R	-4603D		-5599X	
	30	100	-0264S	-4604E		-5600A	
	35	100	-0265T	-4605F		-	
	40	50	-0266V	-4606G		-5602C	
45	50	-	-4607H		-		
50	50	-0268X	-4608J		-5603D		

**FASTENERS**

**GROUP 604 SOCKET HEAD BUTTON SCREWS/FLANGE BUTTON SCREWS**

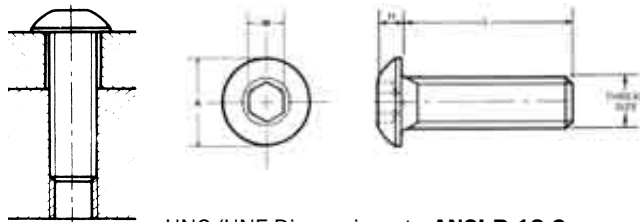
**QUALFAST Socket Head Button Screws**

High Grade Alloy Steel to **BS EN ISO 898/1 Grade 10.9.**

Suitable for all high tensile applications. Maximum operating temperature (unplated): 300°C.

For materials that are too thin to countersink. Low head profile for a smooth finished appearance. Also suitable for non-critical loading requiring heat treated fasteners.

**NEW**



UNC/UNF Dimensions to **ANSI B 18.3**

Thread Size	Dimensions (mm)		
	A	H	W (hex)
<b>UNC/UNF</b>			
<b>6</b>	.262	.073	<sup>5</sup> / <sub>64</sub>
<b>8</b>	.312	.087	<sup>3</sup> / <sub>32</sub>
<b>10</b>	.361	.101	<sup>1</sup> / <sub>8</sub>
<sup>1</sup> / <sub>4</sub>	.437	.132	<sup>5</sup> / <sub>32</sub>
<sup>5</sup> / <sub>16</sub>	.547	.166	<sup>3</sup> / <sub>16</sub>

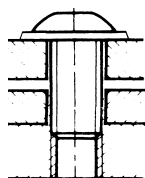
**FASTENERS**

<b>No.4 to 3/8"</b>		<b>UNF - Self Colour</b>		<b>UNC Stainless A2 Steel</b>		<b>UNC - Self Colour</b>	
Size	L	Box Qty	Order Code	Box Qty	Order Code	Box Qty	Order Code
			<b>QFT-605</b>			<b>QFT-605</b>	
<b>4</b>	1/4"	-	-	-	<b>-5625G</b>	-	<b>-0293D</b>
	3/8"	-	-	-	<b>-5626H</b>	-	<b>-0294E</b>
	1/2"	-	-	-	<b>-5627J</b>	-	-
<b>6</b>	3/4"	-	-	-	<b>-5628K</b>	-	-
	3/8"	-	-	-	<b>-5632T</b>	-	<b>-0295F</b>
	1/2"	-	-	-	<b>-5633V</b>	-	<b>-0296G</b>
<b>8</b>	3/4"	-	-	-	<b>-5634W</b>	-	<b>-0297H</b>
	1"	-	-	-	<b>-5635X</b>	-	-
	1/4"	-	-	-	<b>-5640A</b>	-	<b>-0300L</b>
<b>10</b>	3/8"	-	-	-	<b>-5641B</b>	-	<b>-0301M</b>
	1/2"	-	-	-	<b>-5642C</b>	-	<b>-0302N</b>
	3/4"	-	-	-	<b>-5643D</b>	-	<b>-0303Y</b>
<b>1 1/4"</b>	1"	-	-	-	<b>-5644E</b>	-	-
	1/4"	100	<b>-0350A</b>	-	<b>-5650K</b>	-	<b>-0305R</b>
	3/8"	100	<b>-0351B</b>	-	<b>-5651L</b>	-	<b>-0306S</b>
<b>1 1/2"</b>	1/2"	100	<b>-0352C</b>	-	<b>-5652M</b>	-	<b>-0307T</b>
	5/8"	100	<b>-0353D</b>	-	-	-	-
	3/4"	100	<b>-0354E</b>	-	<b>-5653N</b>	-	<b>-0309W</b>
<b>1 3/4"</b>	1"	100	<b>-0355F</b>	-	<b>-5654P</b>	-	<b>-0311Y</b>
	3/8"	100	-	-	-	100	<b>-0313Z</b>
	1/2"	100	<b>-0357H</b>	100	<b>-5670A</b>	100	<b>-0314A</b>
<b>1 5/8"</b>	3/4"	100	<b>-0359K</b>	100	<b>-5671B</b>	100	<b>-0315B</b>
	1"	100	<b>-0361L</b>	100	<b>-5672C</b>	100	<b>-0316C</b>
	1/2"	200	<b>-0362M</b>	100	<b>-5680R</b>	100	<b>-0319E</b>
<b>1 7/8"</b>	5/8"	200	<b>-0363M</b>	100	<b>-5681S</b>	100	<b>-0320G</b>
	3/4"	200	<b>-0364N</b>	100	<b>-5682T</b>	100	<b>-0321H</b>
	1"	200	<b>-0367S</b>	100	<b>-5683V</b>	100	<b>-0322J</b>
<b>2"</b>	1/2"	-	-	100	<b>-5690E</b>	100	<b>-0323J</b>
	3/4"	-	-	100	<b>-5691F</b>	100	<b>-0324L</b>
	1"	-	-	100	<b>-5692G</b>	100	<b>-0326N</b>

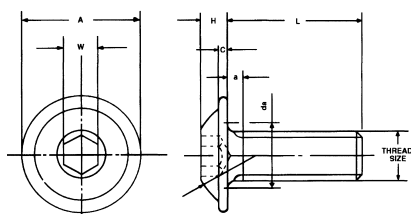
**Socket Head Flange Button Screws**

An extra wide flange below the button head makes these fasteners ideal for fixing strips cover plates and sheet metal housings that require a greater load spread.

**NEW**



Thread Size	Dimensions (mm)		
	A	H	W (hex)
<b>M4</b>	9.29	2.2	2.5
<b>M5</b>	11.40	2.8	3.0
<b>M6</b>	13.59	3.3	4.0
<b>M8</b>	17.00	4.4	5.5
<b>M10</b>	20.80	5.4	6.0



Dimensions to **BS EN ISO 898/1 Grade 10.9 DIN 7380**

**M3 to M10 ISO Metric - Self Colour**



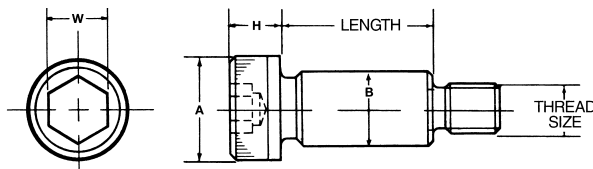
Size	L	Box Qty	Order Code
<b>Standard (Self-Colour)</b>			
<b>QFT-604</b>			
<b>M3</b>	8	200	<b>-3001B</b>
	10	200	<b>-3002C</b>
	12	200	<b>-3003D</b>
<b>M4</b>	6	200	<b>-3008J</b>
	8	200	<b>-3009K</b>
	10	200	<b>-3010L</b>
<b>M5</b>	12	200	<b>-3011M</b>
	16	200	<b>-3013P</b>
	8	200	<b>-3019W</b>
<b>M6</b>	10	200	<b>-3020X</b>
	12	200	<b>-3021Y</b>
	14	200	<b>-3022Z</b>
<b>M8</b>	16	200	<b>-3023A</b>
	20	200	<b>-3024B</b>
	25	200	<b>-3026D</b>

Size	L	Box Qty	Order Code
<b>QFT-604</b>			
<b>M6</b>	8	200	<b>-3031J</b>
	10	200	<b>-3032K</b>
	12	200	<b>-3033L</b>
	16	200	<b>-3035N</b>
	20	200	<b>-3036P</b>
	25	200	<b>-3038R</b>
<b>M8</b>	30	200	<b>-3039S</b>
	35	200	<b>-3040T</b>
	40	200	<b>-3041V</b>
	50	200	<b>-3043X</b>
	10	200	<b>-3044Y</b>
	12	200	<b>-3045Z</b>
<b>M10</b>	16	200	<b>-3047B</b>
	20	200	<b>-3048C</b>
	25	200	<b>-3050E</b>
	30	200	<b>-3051F</b>
	35	200	<b>-3052G</b>
	50	200	<b>-3055K</b>
<b>M10</b>	16	200	<b>-3058N</b>
	20	200	<b>-3059P</b>
	25	200	<b>-3061R</b>
30	200	<b>-3062S</b>	

**SOCKET HEAD SHOULDER SCREWS**

**QUALFAST Socket Head Shoulder Screws - Metric**

High Grade Alloy Steel to **BS EN ISO 898/1 Grade 12.9**. Suitable for replacing costly components such as shafts, pivots, guides, pins, linkages and trunion mountings. Also commonly used in the die mould industry. Maximum operating temperature (unplated): 300°C.



Dimensions to ISO 7379  
Body Diameter Tol h8

Thread Size	Dimensions (mm)			
	B	A	H	W (hex)
M5	6.0	10.0	4.5	3.0
M6	8.0	13.0	5.5	4.0
M8	10.0	16.0	7.0	5.0
M10	12.0	18.0	9.0	6.0
M12	16.0	24.0	12.0	8.0
M16	20.0	30.0	14.0	10.0
M20	24.0	36.0	16.0	12.0
M24	28.0	40.0	18.0	14.0

Thread Size	Dimensions (mm)			
	B	A	H	w (hex)
3/16"	0.2480	0.375	0.188	1/8"
1/4"	0.3105	0.437	0.219	5/32"
5/16"	0.3730	0.562	0.250	3/16"
3/8"	0.4980	0.750	0.313	1/4"
1/2"	0.6230	0.875	0.375	5/16"
5/8"	0.7480	1.000	0.500	3/8"
3/4"	0.9980	0.132	0.625	1/2"

**M5 to M20**

**ISO Metric**



Standard (Self-Colour)

Thread Size	L	Box Qty	Order Code
M5	10	50	-0510A
	12	50	-0512C
	15	50	-0515F
	16	50	-0516G
	20	50	-0520L
	25	50	-0525R
	30	50	-0530X
	40	50	-0540H
	45	50	-0545N
	50	50	-0541J
60	50	-0547Q	
M6	10	50	-0610Y
	12	50	-0612A
	15	50	-0615F
	16	50	-0616G
	20	50	-0620L
	25	50	-0625R
	30	50	-0630X
	35	50	-0635C
	40	50	-0640H
	45	50	-0645K
	50	50	-0650J
	60	50	-0651K
65	50	-0651T	
70	50	-0652L	
75	50	-0653A	
80	50	-0653M	
90	50	-0655P	
M8	10	50	-0810A
	12	50	-0812C
	15	50	-0815F
	16	50	-0816G
	20	50	-0820L
	25	50	-0825R
	30	50	-0830X
	35	50	-0835C
	40	50	-0840H
	45	50	-0845N
	50	50	-0850T
	60	50	-0860V
65	50	-0865A	
70	50	-0870Q	
80	50	-0880B	
90	50	-0890D	
100	50	-0900F	
120	50	-0920H	

Thread Size	L	Box Qty	Order Code
M10	15	25	-1015F
	16	25	-1016G
	20	25	-1020L
	25	25	-1025R
	30	25	-1030S
	35	25	-1035T
	40	25	-1040H
	45	25	-1045K
	50	25	-1050T
	55	25	-1055Y
	60	25	-1060E
	70	25	-1070Q
	80	25	-1080B
	90	25	-1090C
100	25	-1100Z	
120	25	-1120H	
140	25	-1140D	
M12	20	25	-1220V
	25	25	-1225W
	30	25	-1230X
	35	25	-1235C
	40	25	-1240H
	50	25	-1250T
	60	25	-1260E
	70	25	-1270Q
	80	25	-1280B
	90	25	-1290L
100	25	-1300Z	
120	25	-1320Z	
140	25	-1340B	
150	25	-1350C	
M16	40	10	-1640H
	50	10	-1650T
	60	10	-1660Z
	70	10	-1670Q
	80	10	-1680B
	90	10	-1690L
M20	100	10	-1700Z
	120	10	-1720Z
	50	5	-2050T
	60	5	-2060Z
M20	70	5	-2070Q
	80	5	-2080B
	100	5	-2100Z
	120	5	-2120Z

**1/4" to 5/8"**

**UNC**

**NEW**



Thread Size	Dimensions (mm)			
	B	A	H	W (hex)
1/4"	.3105	.437	.219	5/32"
5/16"	.3730	.562	.250	3/16"
3/8"	.4980	.750	.313	1/4"
5/8"	.7480	1.000	.500	3/8"

Standard (Self-Colour)

Thread Size	L	Box Qty	Order Code
1/4"	3/8"	25	-4611A
	1"	25	-4614D
	1"	25	-4714D
5/16"	1 1/2"	25	-4716F
	2 1/2"	25	-4720K
	2 3/4"	25	-4721L

Thread Size	L	Box Qty	Order Code
3/8"	1"	25	-4814D
	2"	25	-4818H
	2 1/2"	25	-4820K
	2 3/4"	25	-4821L
	3"	25	-4822M
	3 1/2"	25	-4824P
5/8"	1 1/2"	25	-5011A
	2 1/4"	25	-5014D
	2 1/2"	25	-5015E
	3 1/2"	25	-5019J
	4"	10	-5021L
	4 1/2"	10	-5023N

**PRODUCTS ARE ONLY AVAILABLE VIA YOUR DISTRIBUTOR**

**Self-Tapping Screws**

**Contents:**

**Slotted Zinc plated Countersunk:**

4 x 1/4, 4 x 5/8, 4 x 3/4, 6 x 1/2, 6 x 3/4, 6 x 1, 8 x 1/2, 8 x 3/4, 8 x 1, 10 x 1/2, 10 x 3/4, 10 x 1.

**Pan Head:**

4 x 1/2, 4 x 3/4, 6 x 1/2, 6 x 3/4, 8 x 1/2, 8 x 3/4, 10 x 1/2, 10 x 3/4, 10 x 1mm.

**Pozi Pan Head:**

4 x 1/2, 6 x 1/2, 8 x 1/2, 10 x 1/2, 12 x 1/2, 4 x 3/4, 6 x 3/4, 8 x 3/4, 10 x 3/4, 12 x 3/4, 6 x 1, 8 x 1, 10 x 1.

**Flange:**

1/2 x 6, 5/8 x 6, 3/4 x 6, 1/2 x 8, 3/4 x 8, 1/2 x 10, 3/4 x 10mm.



Type	Average Quantity	Weight each	Order Code KEN-615
Countersunk	700	0.85kg	-4050K
Pan Head (s)	700	1.10kg	-4060K
Pan Head (p)	700	1.20kg	-4600K
Flange	700	1.10kg	-4610K

**Nails**

**Contents:**

**Wood Round Head:**

1, 1 1/2, 2, 2 1/2".

**Wood Oval Wire:**

1, 1 1/2, 2, 2 1/2".

**Masonry:**

25, 30, 40, 50 and 60mm.



Type	Average Quantity	Weight each	Order Code KEN-615
Wood	525	1.35kg	-4340K

**Countersunk Wood Screws**

**Contents:**

**Slotted Zinc Plated:**

1/2 x 4, 3/4 x 4, 3/4 x 6, 1 x 6, 1/2 x 8, 3/4 x 8, 1 x 10, 1 1/2 x 10mm.

**Slotted Brass:**

4 x 18, 6 x 18, 6 x 25, 7 x 25, 8 x 18, 8 x 25, 8 x 38, 10 x 8mm.

**Pozidriv® Zinc Plated:**

1/2 x 4, 3/4 x 4, 3/4 x 6, 1 x 6, 1/2 x 8, 3/4 x 8, 1 x 10, 1 1/2 x 10mm.



Type	Average Quantity	Order Code KEN-615
Zinc Slotted	350	-4360K
Pozidriv®	350	-4370K

**Wall Plugs**

**Contents:**

Yellow, Red, Brown and Blue.



Type	Average Quantity	Order Code KEN-615
Wall Plugs	220	-4740K



**Nuts & Bolts**

**Mild Steel. Grade 4.6.**

**Contents:** M6 x 20, M6 x 40, M6 x 45, M8 x 25, M8 x 30, M8 x 35 and M8 x 50mm.



Type	Average Quantity	Weight each	Order Code <b>KEN-615</b>
Metric	200	1.70kg	<b>-4030K</b>

**Machine Screws & Nuts**

**Contents:**

**Steel:** M3 x 12, M3 x 16, M3 x 20, M3.5 x 10, M3.5 x 12, M3.5 x 16, M4 x 8, M4 x 10, M4 x 12, M4 x 16, M4 x 20, M4 x 25, M5 x 10, M5 x 12, M5 x 16, M5 x 20, M6 x 10, M6 x 12, M6 x 16, M6 x 20 and M6 x 25.

**Brass - Plus Washers:** 4BA x 3/4, 4BA x 1, 4BA x 1 1/2, 2BA x 3/4, 2BA x 1 and 2BA x 1 1/2.



Type	Average Quantity	Weight each	Order Code <b>KEN-615</b>
Steel	600	1.15kg	<b>-4290K</b>

**Nyloc Zinc Plated Nuts**

**Contents:** M5, M6, M8, M10, M12, M14 and M16.



Type	Average Qty	Weight each	Order Code <b>KEN-615</b>
Metric	300	1.10kg	<b>-4180K</b>

**Cold Formed Zinc Plated Nuts**

**Contents:** M5, M6, M8, M10 and M12.



Type	Average Qty	Weight each	Order Code <b>KEN-615</b>
Metric	375	1.40kg	<b>-4150K</b>

**Zinc Plated Wing Nuts**

**Contents:** M4, M5, M6, M8 and M10.



Type	Average Qty	Weight each	Order Code <b>KEN-615</b>
Metric	100	0.50kg	<b>-4210K</b>

**Set Screws, Nuts & Washers**

**Contents:**

**Metric: Grade 8.8:** M6 x 25, M6 x 40, M8 x 25, M8 x 40, M10 x 25, M10 x 40mm.

**UNF: Grade 'S':** 1/4 x 3/4, 1/4 x 1, 5/16 x 1, 5/16 x 1 1/4, 3/8 x 1, 3/8 x 1 1/2.

**UNC: Grade 'S':** 1/4 x 3/4, 1/4 x 1, 5/16 x 1, 5/16 x 1 1/4, 3/8 x 1, 3/8 x 1 1/2.



Type	Average Quantity	Weight each	Order Code <b>KEN-615</b>
Metric	288	2.2kg	<b>-4110K</b>
UNF	264	2.1kg	<b>-4120K</b>
UNC	264	2.2kg	<b>-4130K</b>

**Metric Nylon Machine Screw, Nut & Washer Kit**

**Contents:** 25 of each

**Countersunk head - Slotted + Nuts and Washers:**

M3 x 8, M3 x 16, M4 x 8, M4 x 16, M4 x 20, M5 x 8, M5 x 16,

**Cheese head - Slotted + Nuts and Washers:**

M3 x 6, M3 x 12, M3 x 25, M4 x 8, M4 x 6, M4 x 12, M4 x 25, M5 x 6, M5 x 12, M5 x 25



Type	Average Quantity	Weight each	Order Code <b>KEN-615</b>
Nylon	525	577g	<b>-4100K</b>

**Washers**

**Contents:**

**Plain:** M5, M6, M8, M10, M12mm.

**Internal Fan Disk:** M5, M6, M8, M10mm.

**Shakeproof:** M5, M6, M8, M10mm.

**Copper:** M4, M5, M6, M8, M10, M12mm.

**Fibre:** M5, M6, M8, M10, M12mm.



Type	Av Qty.	Weight each	Order Code KEN-615
Plain	1500	1.3kg	-4230K
Spring	750	0.6kg	-4250K
Copper	300	0.5kg	-4690K
Fibre	600	0.4kg	-4280K

**Washers - Square Section Spring Metric BZP**

**Contents:** M5, M6, M8, M10 and M12.



Type	Weight each	Order Code KEN-615
Square Section	915g	-4240K

**Woodruff Keys**

**Contents:** 1/2 x 13/64 x 1/16, 1/2 x 13/64 x 3/32, 1/2 x 13/64 x 1/8, 5/8 x 1/4 x 3/32, 5/8 x 1/4 x 1/8, 5/8 x 1/4 x 5/32, 5/8 x 1/4 x 3/16, 3/4 x 5/16 x 1/8, 3/4 x 5/16 x 5/32, 3/4 x 5/16 x 3/16, 3/4 x 5/16 x 1/4, 7/8 x 3/8 x 5/32, 7/8 x 3/8 x 3/16, 7/8 x 3/8 x 7/32 and 7/8 x 3/8 x 1/4.



Average Qty	Weight each	Order Code KEN-615
100	0.45kg	-4540K

**Compression & Expansion Springs**



**Contents:**

**Expansion Springs**

Wire Dia. mm	Outside Dia. mm	Overall Length mm
0.70	6.29	31.5
0.50	4.70	40.0
0.60	6.29	51.5
0.60	6.29	64.5
0.60	4.70	58.0
0.80	9.80	70.0

**Compression Springs**

Wire Dia. mm	Outside Dia. mm	Overall Length mm
0.70	8.90	50.0
0.50	6.00	25.0
1.00	8.90	50.0
1.00	8.90	25.0
0.50	6.00	50.0
1.00	7.40	50.0



Type	Average Quantity	Weight each	Order Code KEN-615
Springs	140	0.55kg	-6590K

**Mudguard Washers**

**Contents:** M5, M6, M8, M10mm.



Average Qty	Weight each	Order Code KEN-615
220	1.45kg	-4270K

**Cap Screws - Socket Head**

**Contents:**

**Metric:** M5 x 16, M5 x 20, M6 x 20, M6 x 25, M8 x 25, M8 x 30, M10 x 25, M10 x 30, M12 x 20, M12 x 25 and M12 x 30mm.

**UNF:** 3/16 x 1/2, 3/16 x 3/4, 3/16 x 1, 1/4 x 3/4, 1/4 x 1, 1/4 x 1 1/4, 5/16 x 3/4, 5/16 x 1, 5/16 x 1 1/2, 3/8 x 3/4, 3/8 x 1 and 3/8 x 1 1/2.



Type	Average Qty	Weight each	Order Code KEN-615
Metric	100	1.15kg	-4630K
UNF	100	1.20kg	-4640K

**KENNEDY** Fastener Assortments  
QUALITY INDUSTRIAL TOOLING

**Blind Grommets**

Made from chemical/heat resistant nylon 66 with a flammability rating of UL94V-2 and material temperature index: 125°C  
**Contents:** Diameters from 4.8 - 45mm for maximum panel thickness from 1.6 - 3.2mm.



Type	Av Qty	Weight each	Order Code KEN-615
Blind Grommets	260	485g	-4760K

**Grommets**

**Contents:** 5/16, 3/8, 1/2, 5/8, 3/4, 7/8, 15/16 and 1".



Type	Av Qty	Weight each	Order Code KEN-615
Plain Grommets	120	0.35kg	-4560K

**Cup Washers**

**Contents:** No.4, No.6, No.8, No.10, No.12 & No.14.



Type	Average Quantity	Weight each	Order Code KEN-615
Cup Washers	465	0.5kg	-4330K

**Panel Clips**

**Contents:** U-Type: No.6, No.8, No.10, No.12 and No.14, J-Type: No.6, No.8, No.10, No.12 and No.14.



Type	Average Quantity	Weight each	Order Code KEN-615
Panel Clips	300	0.75kg	-4480K

**Wiring Grommets**

**Contents:** 6mm, 8mm, 10mm, 11mm, 12mm, 14mm, 18mm and 20mm.



Type	Av Qty	Weight each	Order Code KEN-615
Wiring Grommets	100	252g	-4580K

**Circlips**

**Contents:** Internal: 14, 16, 19, 22, 24, 25mm. External: 12, 14, 16, 19, 22, 24 and 25mm.



Type	Ave. Qty.	Weight each	Order Code KEN-615
Circlips	285	0.5kg	-4470K

**KENNEDY Fastener Assortments**  
QUALITY INDUSTRIAL TOOLING

**Split Cotter Pins**

**Contents:**

**Large:** 1/8 x 1 1/2, 1/8 2 1/4, 9/64 x 2 1/4, 5/32 x 1 1/2, 5/32 x 2 1/2, 3/16 x 1 1/2, 3/16 x 2, 1/4 x 2.

**Small:** 1/16 x 3/4 (1), 5/64 x 3/4 (1), 3/32 x 3/4 (1), 7/64 x 5/8 (1), 1/8 x 5/8 (1), 5/32 x 1/2 (1), 1/16 x 1 1/4 (1 1/2), 5/64 x 1 1/4 (1 1/2), 3/32 x 1 1/4 (1 1/2), 7/64 x 1 1/4 (1 1/2), 1/8 x 1 (1 1/2), 5/32 x 1 (1 1/2).



Type	Average Quantity	Weight each	Order Code <b>KEN-615</b>
Large	200	1.35kg	<b>-4420K</b>
Small	1000	1.00kg	<b>-4430K</b>

**Spring Tension Pins**

**Contents:**

2.5 x 24, 2.5 x 40, 3 x 24, 3 x 40, 4 x 24, 4 x 40, 5 x 24, 5 x 40, 6 x 24, 6 x 40 and 8 x 55mm.



Type	Average Quantity	Weight each	Order Code <b>KEN-615</b>
Roll Pins	300	0.8kg	<b>-4500K</b>

**Starlock Washers, Uncapped**

**Contents:**

3/32, 1/8, 5/32, 3/16, 1/4, 5/16, 3/8, 7/16, 1/2, 5/8, 3/4.



Type	Average Quantity	Weight each	Order Code <b>KEN-615</b>
Starlock Washers	585	0.45kg	<b>-4320K</b>

**Clevis Pins**

**Contents:**

3/16 x 3/4, 3/16 x 1, 1/4 x 3/4, 1/4 x 1, 1/4 x 1 1/4, 1/4 x 1 1/2, 5/16 x 3/4, 5/16 x 1, 5/16 x 1 1/4, 5/16 x 1 1/2, 3/8 x 3/4, 3/8 x 1, 3/8 x 1 1/2.



Type	Average Quantity	Weight each	Order Code <b>KEN-615</b>
Clevis Pins	170	1.25kg	<b>-4490K</b>

**Metric 'O' Rings**

**Contents:**

M6, M10, M11, M14, M17, M21, M24, M25.

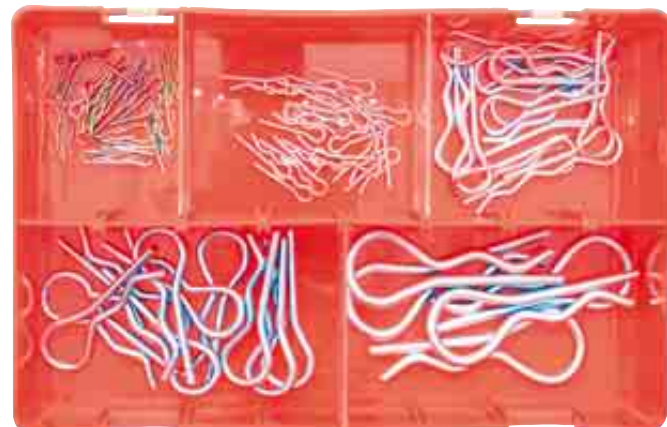


Type	Average Quantity	Weight each	Order Code <b>KEN-615</b>
Metric 'O' Rings	400	0.30kg	<b>-4900K</b>

**Retaining Clips**

**Contents: (D x L)**

5 - 7 x 1.2, 7 - 9 x 1.2, 9 - 11 x 2, 14 - 16 x 3, 14 - 18 x 4mm.



Type	Average Quantity	Weight each	Order Code <b>KEN-615</b>
Retaining Clips	75	0.40kg	<b>-4800K</b>



**QUALFAST Stainless Fastener Assortments**

**NEW**

**A2 Stainless Steel Socket Cap Screw Kit**

**Contents:** 5 x 12, 5 x 16, 5 x 20, 6 x 12, 6 x 16, 6 x 20, 6 x 25, 8 x 16, 8 x 20 and 8 x 25.



Type	Average Quantity	Weight each	Order Code
Metric	250	2.0kg	<b>-4380K</b>

**A2 Stainless Steel Nuts and Washer Kit**

**Contents:**

**Full Nuts:** M5, M6, M8, M10 and M12.

**Form B:** M5, M6, M8, M10 and M12.

**NEW**



Type	Average Quantity	Weight each	Order Code
Metric	890	1.7kg	<b>-4400K</b>

**A2 Stainless Steel Socket Button Screw Kit**

**Contents:** M5 x 12, M5 x 16, M5 x 20, M6 x 12, M6 x 16, M6 x 20, M6 x 25, M8 x 20, M8 x 25 and M8 x 30.

**NEW**



Type	Average Quantity	Weight each	Order Code
Metric	310	1.5kg	<b>-4420K</b>

**A2 Stainless Steel Hex Set Screw Kit**

**Contents:** M6 x 12, M6 x 16, M6 x 20, M6 x 25, M8 x 20, M8 x 25, M8 x 30, M10 x 25 and M10 x 20.

**NEW**



Type	Average Quantity	Weight each	Order Code
Metric	200	2.2kg	<b>-4390K</b>

**A2 Stainless Steel CSK Socket Screw Kit**

**Contents:** M5 x 12, M5 x 16, M5 x 20, M6 x 12, M6 x 16, M6 x 20, M6 x 25, M8 x 20, M8 x 25 and M8 x 30.

**NEW**



Type	Average Quantity	Weight each	Order Code
Metric	410	1.9kg	<b>-4410K</b>

**A2 Stainless Steel Pozi CSK Woodscrew Kit**

**Contents:** 3.5 x 16, 3.5 x 20, 3.5 x 25, 4.0 x 20, 4.0 x 25, 4.0 x 30, 5.0 x 25, 5.0 x 30, 5.0 x 40 and 5.0 x 50.

**NEW**



Type	Average Quantity	Weight each	Order Code
Metric	625	1.5kg	<b>-4430K</b>

**GROUP 615 FASTENER ASSORTMENTS**

**QUALFAST Stainless Fastener Assortments**

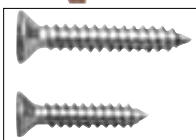
**A2 Stainless Steel Pozi Self-tapping Screw Kits**

**CSK STS contents:** 2.9 x 13, 2.9 x 16, 3.5 x 13 3.5 x 19, 3.5 x 25, 4.2 x 13, 4.2 x 19, 4.2 x 25, 4.8 x 16 and 4.8 x 25.

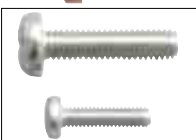
**PAN STS contents:** 2.9 x 13, 2.9 x 16, 3.5 x 13 3.5 x 19, 3.5 x 25, 4.2 x 13, 4.2 x 19, 4.2 x 25, 4.8 x 16 and 4.8 x 25.

**-4440K**

**-4450K**



**NEW**



Type	Average Quantity	Weight each	Order Code
Pozi CSK	900	1.5kg	<b>-4440K</b>
Pozi PAN	900	1.4kg	<b>-4450K</b>

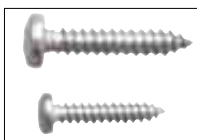
**A2 Stainless Steel Pozi M/C Screw Kits**

**PAN M/C contents:** M4 x 10, M4 x 12, M4 x 16, M5 x 16, M5 x 20, M6 x 12 M6 x 16, M6 x 20 and M6 x 25.

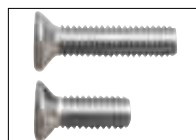
**CSK M/C contents:** M4 x 10, M4 x 12, M4 x 16, M5 x 16, M5 x 20, M6 x 12 M6 x 16, M6 x 20 and M6 x 25.

**-4460K**

**-4470K**



**NEW**



Type	Average Quantity	Weight each	Order Code
Pozi PAN	400	2.3kg	<b>-4460K</b>
Pozi CSK	500	1.4kg	<b>-4470K</b>



**Brass Fastener Assortment**

**Brass Hex Nuts and Washer Set**

**Contents:** M6 x 12, M6 x 16, M6 x 20, M6 x 25, M8 x 16, M8 x 20, M8 x 25, M8 x 30, M10 x 25 and M10 x 30.

**NEW**

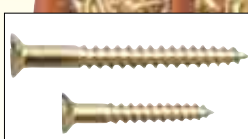


Type	Average Quantity	Weight each	Order Code
Metric	110	2.2kg	<b>-5400K</b>

**Brass Slot CSK Woodscrew Kit**

**Contents:** 3.5 x 16, 3.5 x 20, 3.5 x 25, 4.0 x 20, 4.0 x 25, 4.0 x 30, 5.0 x 25, 5.0 x 30, 5.0 x 40 and 5.0 x 50.

**NEW**



Type	Average Quantity	Weight each	Order Code
CSK	625	2.1kg	<b>-5430K</b>

**Brass Slot Pan M/C Nuts and Washer Set**

**Contents:** M4 x 8, M4 x 10, M4 x 12, M4 x 16, M5 x 16, M5 x 20, M6 x 12, M6 x 16, M6 x 20 and M6 x 25.

**NEW**



Type	Average Quantity	Weight each	Order Code
Metric	310	1.9kg	<b>-5460K</b>

**Brass Slot CSK M/C Nut and Washer Set**

**Contents:** M4 x 8, M4 x 10, M4 x 12, M4 x 16, M5 x 16, M5 x 20, M6 x 12, M6 x 16, M6 x 20 and M6 x 25.

**NEW**



Type	Average Quantity	Weight each	Order Code
Metric	310	1.6kg	<b>-5470K</b>



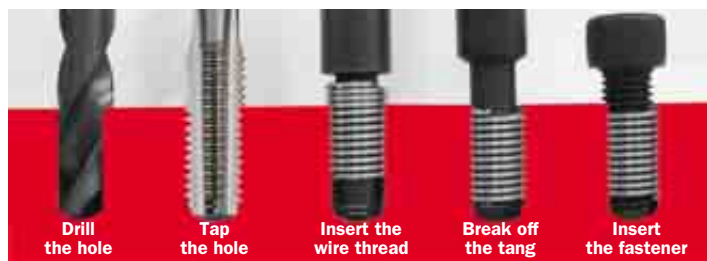
**Wire Thread Insert Kits**

Suitable for repairing damaged and worn threads, also ideal for new applications. Ideal for use with alloys and other light materials. Can also be used for converting from metric to inch and vice versa. 1½" x diameter in length. Other lengths are available on request. Each kit supplied with inserts, HSS hand tap, insertion tool and instructions.

**Kits come complete with: Hand Tap, Inserting Tool and Inserts.**

† Includes Punch.

\* Includes Drill and Punch.



**Threading Inserts**

Range now extended to include 1 x D and 2 x D lengths (ISO Metric threads). Our quality inserts are now supplied in packs of 10 or 50. Other sizes and lengths are available on request, please ask for further information.  
Insert length = 1.5 x D.

ISO Metric Threads			Packs of 10 Inserts	Packs of 50 Inserts
Insert Length	Thread x Pitch	Clearance Drill (mm)	Order Code KEN-620	Order Code KEN-620
1xD	M3 x 0.50	3.20	-5502K	-7402K
	M4 x 0.70	4.20	-5504K	-7404K
	M5 x 0.80	5.20	-5505K	-7405K
	M6 x 1.00	6.20	-5506K	-7406K
	M7 x 1.00	7.20	-5507K	-7407K
	M8 x 1.00	8.20	-5508K	-7408K
	M8 x 1.25	8.30	-5509K	-7409K
	M10 x 1.00	10.25	-5512K	-7412K
	M10 x 1.25	10.25	-5513K	-7413K
	M10 x 1.50	12.25	-5514K	-7414K
1.5xD	M3 x 0.50	3.20	-6010K	-
	M4 x 0.70	4.20	-6030K	-
	M5 x 0.80	5.20	-6050K	-
	M6 x 1.00	6.20	-6070K	-
	M7 x 1.00	7.20	-6090K	-
	M8 x 1.00	8.20	-6110K	-
	M8 x 1.25	8.30	-6120K	-
	M10 x 1.00	10.25	-6140K	-
	M10 x 1.25	10.25	-6150K	-
	M10 x 1.50	10.25	-6160K	-
	M12 x 1.25	12.25	-6180K	-
	M12 x 1.50	12.25	-6190K	-
	M12 x 1.75	12.50	-6200K	-
	M14 x 1.25	14.25	-6220K	-
	M14 x 1.50	14.25	-6230K	-
	M14 x 2.00	14.50	-6240K	-
M16 x 1.50	16.50	-6260K	-	
M16 x 2.00	16.50	-6270K	-	
2xD	M3 x 0.50	3.20	-6302K	-7802K
	M4 x 0.70	4.20	-6304K	-7804K
	M5 x 0.80	5.20	-6305K	-7805K
	M6 x 1.00	6.20	-6306K	-7806K
	M7 x 1.00	7.20	-6307K	-7807K
	M8 x 1.00	8.20	-6308K	-7808K
	M8 x 1.25	8.30	-6309K	-7809K
	M10 x 1.00	10.25	-6312K	-7812K
	M10 x 1.25	10.25	-6313K	-7813K
	M10 x 1.50	12.25	-6314K	-7814K

Thread Form	Tap Size	Clearance Drill Size	Inserts/Kit	Weight each	Order Code KEN-621
Metric	M3 x 0.50*	3.20	10	105g	-1120K
Metric	M4 x 0.70*	4.20	10	122g	-1160K
Metric	M5 x 0.80*	5.20	10	142g	-1200K
Metric	M6 x 1.00*	6.20	10	169g	-1240K
Metric	M7 x 1.00*	7.20	10	190g	-1280K
Metric	M8 x 1.00*	8.20	10	162g	-1320K
Metric	M8 x 1.25*	8.30	10	180g	-1340K
Metric	M10 x 1.00*	10.25	10	226g	-1400K
Metric	M10 x 1.25*	10.25	10	226g	-1420K
Metric	M10 x 1.50*	10.40	10	225g	-1430K
Metric	M12 x 1.25†	12.25	10	309g	-1480K
Metric	M12 x 1.50†	12.25	5	309g	-1490K
Metric	M12 x 1.75†	12.50	5	290g	-1500K
Metric	M14 x 1.25	14.25	5	459g	-1560K
Metric	M14 x 1.50	14.25	5	325g	-1580K
Metric	M14 x 2.00	14.50	5	325g	-1600K
Metric	M16 x 1.50	16.50	5	343g	-1640K
Metric	M16 x 2.00	16.50	5	354g	-1660K
UNC	No.4 - 40*	No.31	10	109g	-2040K
UNC	No.8 - 32*	11/64"	10	123g	-2080K
UNC	1/4" - 20*	17/64"	10	166g	-2160K
UNC	5/16" - 18*	21/64"	10	201g	-2200K
UNC	3/8" - 16*	25/64"	10	226g	-2240K
UNC	1/2" - 13	17/32"	10	293g	-2320K
UNF	No.10 - 32*	13/64"	10	138g	-3100K
UNF	1/4" - 28*	17/64"	10	160g	-3160K
UNF	5/16" - 24*	21/64"	10	216g	-3200K
UNF	3/8" - 24*	25/64"	10	218g	-3240K
UNF	1/2" - 20	33/64"	5	289g	-3320K
BSF	1/4" - 26*	17/64"	10	155g	-4160K
BSF	5/16" - 22*	21/64"	10	215g	-4200K
BSF	3/8" - 20*	25/64"	10	208g	-4240K
BSP	1/8" - 28*	3/8"	10	210g	-4540K
BSP	1/4" - 19	33/64"	10	335g	-4580K
BSP	3/8" - 19	21/32"	5	323g	-4620K
BSP	1/2" - 14	13/16"	5	1175g	-4660K
BSW	1/4" - 20*	6.70mm	10	162g	-5080K
BSW	3/8" - 16*	9.90mm	10	212g	-5120K



Insert Length	Thread x Pitch	Clearance Drill (mm)	Order Code KEN-620
<b>UNC Threads</b>			
1.5 x D	No.4 - 40	No.31	-6840K
	No.8 - 32	11/64"	-6880K
	1/4" - 20	17/64"	-6900K
	5/16" - 18	21/64"	-6910K
	3/8" - 16	25/64"	-6920K
	1/2" - 13	17/32"	-6940K
<b>UNF Threads</b>			
1.5 x D	No.10 - 32	13/64"	-7090K
	1/4" - 28	17/64"	-7100K
	5/16" - 24	21/64"	-7110K
	3/8" - 24	25/64"	-7120K
	1/2" - 20	33/64"	-7140K
<b>BSF Threads</b>			
1.5 x D	1/4" - 26	17/64"	-6420K
	5/16" - 22	21/64"	-6430K
	3/8" - 20	25/64"	-6440K
<b>BSW Threads</b>			
1.5 x D	1/4" - 20	6.70	-6620K
	3/8" - 16	9.90	-6640K
<b>BSP Threads</b>			
1.5 x D	1/8" - 28	10.00	-7320K
	1/4" - 19	13.60	-7340K
	3/8" - 19	17.25	-7360K
	1/2" - 14	21.50	-7380K

**GROUP 635 WOODSCREWS/NAILS**

**Round Head Wire Nails**

Round wire nails are large round head nails that are mostly used for rough carpentry where appearance is not important but strength is essential. Sizes from 25 to 150mm (1" to 6").

**NEW**



Pack Weight	Size	Order Code MTL-690
500g	25mm	-0100K
	30mm	-0110K
	40mm	-0120K
	50mm	-0130K
	65mm	-0140K
	75mm	-0150K
1kg	100mm	-0160K
	125mm	-0170K
	150mm	-0180K
	25mm	-0190K
	30mm	-0200K
	40mm	-0210K
2kg	50mm	-0220K
	65mm	-0230K
	75mm	-0240K
	100mm	-0250K
	125mm	-0260K
	150mm	-0270K
5kg	25mm	-0280K
	30mm	-0290K
	40mm	-0300K
	50mm	-0310K
	65mm	-0320K
	75mm	-0330K
1kg	100mm	-0340K
	125mm	-0350K
	150mm	-0360K
	25mm	-0370K
	30mm	-0380K
	40mm	-0390K
2kg	50mm	-0400K
	65mm	-0410K
	75mm	-0420K
	100mm	-0430K
	125mm	-0440K
	150mm	-0450K

**FASTENERS**

**MATLOCK Pozidriv® Wood screws**

For power driving into hard and soft wood, MDF and chipboard. Manufactured to reduce wood split. Heat-treated for high resistance to breakage.

**Gold-ZP™ Fibre Board Woodscrews**

With an aggressive clean cutting single thread drives easily - even in MDF and chipboard. Passivated zinc-plated and lubricated to aid penetration. 25° point angle usually needs no pilot.

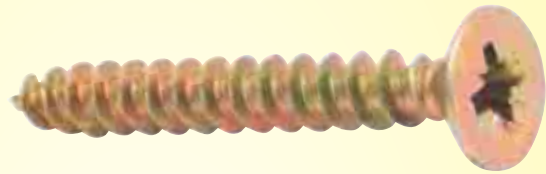
**Hard/Soft Wood**



**Chipboard**



**MDF**



**Metric**

Size (mm)	Box Qty	Order Code MTL-635	Size (mm)	Box Qty	Order Code MTL-635
3.0 x 12	200	-1020K	4.0 x 45	200	-1190K
3.0 x 16	200	-1025K	4.0 x 50	200	-1200K
3.0 x 20	200	-1030K	4.0 x 55	200	-1210K
3.0 x 25	200	-1040K	4.0 x 60	200	-1220K
3.0 x 40	200	-1050K	4.0 x 70	200	-1225K
3.5 x 12	200	-1070K	4.0 x 75	200	-1230K
3.5 x 16	200	-1080K	4.5 x 25	200	-1240K
3.5 x 20	200	-1090K	4.5 x 40	200	-1260K
3.5 x 25	200	-1100K	5.0 x 30	200	-1300K
3.5 x 30	200	-1110K	5.0 x 40	200	-1320K
3.5 x 35	200	-1115K	5.0 x 45	200	-1325K
3.5 x 40	200	-1120K	5.0 x 50	200	-1330K
3.5 x 45	200	-1125K	5.0 x 60	200	-1340K
3.5 x 50	200	-1130K	5.0 x 70	100	-1360K
4.0 x 16	200	-1140K	5.0 x 80	100	-1380K
4.0 x 20	200	-1150K	5.0 x 90	100	-1390K
4.0 x 25	200	-1160K	5.0 x 100	100	-1400K
4.0 x 30	200	-1170K	6.0 x 80	100	-1420K
4.0 x 35	200	-1175K	6.0 x 100	100	-1440K
4.0 x 40	200	-1180K	6.0 x 130	100	-1470K

**Screw Organiser**

2880 Pieces  
Countersunk Wood Screws

Contents:  
Silver Twin Thread Woodscrews

- No.6 x 3/4" (325),
- No.6 x 1" (375),
- No.8 x 1" (575),
- No.8 x 1 1/4" (400),
- No.8 x 1 1/2" (300),
- No.8 x 2" (200),
- No.8 x 2 1/2" (75),
- No.10 x 2" (70),
- No.10 x 2 1/2" (60),
- No.10 x 3" (50).

**Fixing Plugs**

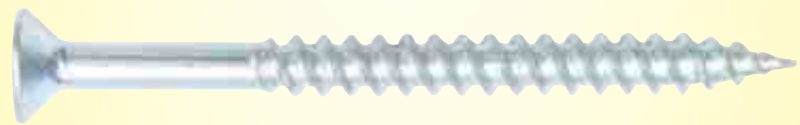
- Red 5.5mm (300).
- Brown 7mm (150).



**Silver-TT™ Twin Thread Woodscrews**

High helix double thread, plated to five microns for greater corrosion-resistance. 35° point angle usually needs no pilot.

**Hard/Soft Wood**



**Inch**

Size	Box Qty	Order Code MTL-635	Size	Box Qty	Order Code MTL-635
6 x 1 1/2"	200	-6000K	8 x 2 1/2"	200	-6184K
6 x 5/8"	200	-6010K	8 x 3"	200	-6188K
6 x 3/4"	200	-6020K	10 x 3 1/4"	200	-6198K
6 x 1"	200	-6040K	10 x 1"	200	-6200K
6 x 1 1/4"	200	-6060K	10 x 1 1/4"	200	-6220K
6 x 1 1/2"	200	-6080K	10 x 1 1/2"	200	-6240K
6 x 1 3/4"	200	-6082K	10 x 1 3/4"	200	-6250K
6 x 2"	200	-6084K	10 x 2"	200	-6260K
7 x 3/4"	200	-6088K	10 x 2 1/2"	100	-6280K
7 x 1"	200	-6090K	10 x 3"	100	-6300K
7 x 1 1/2"	200	-6092K	10 x 3 1/2"	100	-6310K
8 x 1 1/2"	200	-6096K	10 x 4"	100	-6320K
8 x 5/8"	200	-6098K	12 x 1"	100	-6330K
8 x 3/4"	200	-6100K	12 x 1 1/4"	200	-6340K
8 x 1"	200	-6120K	12 x 1 1/2"	200	-6350K
8 x 1 1/4"	200	-6140K	12 x 2"	200	-6370K
8 x 1 1/2"	200	-6160K	12 x 2 1/4"	200	-6380K
8 x 1 3/4"	200	-6170K	12 x 2 1/2"	100	-6390K
8 x 2"	200	-6180K	12 x 3"	100	-6400K
8 x 2 1/4"	200	-6182K	12 x 4"	100	-6420K

**METAL CASE**



Screw Type	Order Code MTL-615
Wood	-0010K

**QUALFAST Circlips**

Circlips simplify designs and linked with lower installation costs are the ideal item for replacing more traditional fasteners. All are manufactured from carbon steel with a phosphate finish.

**External**



**External  
DIN 471**

**Internal**



**Internal  
DIN 472**

Metric		
Dia. (mm)	Pack Qty	Order Code
		<b>QFT-649</b>
3	100	-2003C
4	100	-2004D
5	100	-2005E
6	100	-2006F
7	100	-2007G
8	50	-2008H
9	50	-2009J
10	50	-2010K
11	50	-2011L
12	50	-2012M
13	50	-2013N
14	50	-2014P
15	50	-2015Q
16	40	-2016R
17	40	-2017S
18	25	-2018T
19	25	-2019V
20	25	-2020W
24	25	-2024Y
25	25	-2025A
26	25	-2026B
27	25	-2027C
28	25	-2028D
29	25	-2029E
30	25	-2030F

Metric		
Dia. (mm)	Pack Qty	Order Code
		<b>QFT-649</b>
8	50	-2208H
9	50	-2209J
10	50	-2210K
11	50	-2211L
12	50	-2212M
13	50	-2213N
14	50	-2214P
15	50	-2215Q
16	40	-2216R
17	40	-2217S
18	25	-2218T
19	25	-2219V
20	25	-2220W
21	25	-2221X
22	25	-2222Y
23	25	-2223Z
24	25	-2224A
25	25	-2225B
26	25	-2226C
27	25	-2227D
28	25	-2228E
29	25	-2229F
30	25	-2230C

**E-Clips**

E-clips simplify designs and linked with lower installation costs are the ideal item for replacing more traditional fasteners. All are manufactured from carbon steel with a phosphate finish. Conform to: **DIN 6799**.



Metric		
Dia. (mm)	Pack Qty	Order Code
		<b>QFT-649</b>
1.2	200	-3992P
1.5	200	-3995S
1.9	200	-3998W
2.3	200	-4001A
3.2	200	-4003C
4.0	100	-4004D
5.0	100	-4005E
6.0	100	-4006F
7.0	100	-4007G
8.0	50	-4008H
9.0	25	-4009J
10.0	25	-4010K
12.0	25	-4012M

**Rivet Nuts**

All of our rivet nuts have a clear plating which is RoHS compliant - this is now the preferred finish across all industries as there is no chromium content as is the case with zinc and yellow finish.

**Steel, Low Profile Head, Splined Body**

The splines on the body bite into the parent material on installation, creating an improved torque resistance compared with standard round bodied rivet nuts. The low profile head creates a high load bearing feature but only results in minimal stand off between the adjoining panels.

Size	Range (Grip)	Hole Size +0.1/-0.0	Dimensions				Box Qty	Order Code
			D	H	P	L		
M4 x 0.7	0.5 - 2.0	6.8	5.9	6.9	0.4	10.0	500	<b>-1004E</b>
M5 x 0.8	0.5 - 3.3	7.6	7.1	8.1	0.8	12.1	500	<b>-1005F</b>
M6 x 1.0	0.7 - 4.2	10.0	9.5	10.4	0.8	15.1	250	<b>-1006G</b>
M8 x 1.25	0.7 - 3.8	13.5	10.5	11.6	0.8	16.1	250	<b>-1008J</b>

**Steel, CSK Head, Splined Body**

The splines on the body bite into the parent material on installation, creating an improved torque resistance compared with standard round bodied rivet nuts. The extra wide countersunk head provides excellent strength whilst leaving the nut flush with the material face.

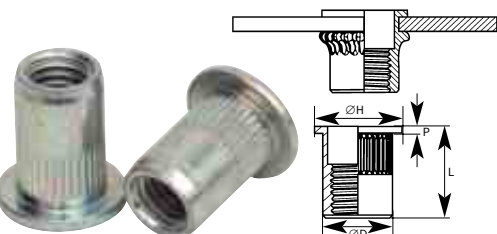
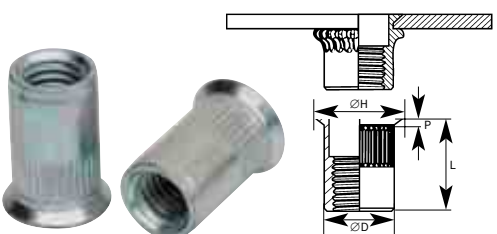
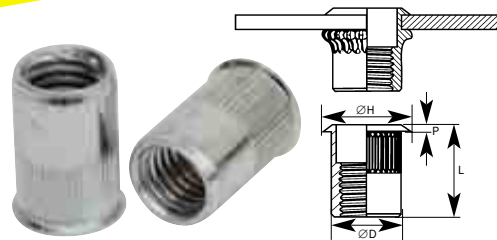
Size	Range (Grip)	Hole Size +0.1/-0.0	Dimensions				Box Qty	Order Code
			D	H	P	L		
M4	0.5 - 2.0	6.0	5.9	8.8	1.4	11.7	500	<b>-1044Y</b>
M5	0.5 - 5.0	8.0	6.9	9.8	1.6	13.1	500	<b>-1045Z</b>
M6	0.5 - 6.0	9.0	8.9	11.8	1.7	16.1	250	<b>-1046A</b>
M8	3.5 - 9.0	11.0	10.9	13.7	2.0	18.6	250	<b>-1048C</b>

**Steel, Flat Head, Splined Body**

The splines on the body bite into the parent material on installation, creating an improved torque resistance compared with standard round bodied rivet nuts. The large flat head makes the fixing ideal for use in high load bearing situations.

Size	Range (Grip)	Hole Size +0.1/-0.0	Dimensions				Box Qty	Order Code
			D	H	P	L		
M4 x 0.7	0.5 - 2.5	6.0	5.9	9.1	0.8	11.7	500	<b>-1024B</b>
M5 x 0.8	0.7 - 3.0	7.0	6.9	10.0	1.0	13.1	500	<b>-1025C</b>
M6 x 1.0	0.8 - 3.0	9.0	8.9	13.0	1.5	16.1	250	<b>-1026D</b>
M8 x 1.25	1.0 - 3.0	11.0	10.9	14.8	1.5	18.1	250	<b>-1028F</b>

**NEW**



**GROUP 650 DOWEL PINS**

**KENNEDY** Quality Industrial  
QUALITY INDUSTRIAL TOOLING **Dowel Pins**

Hardened and precision ground. Conform with **DIN 6325**.  
**Metric:** Sizes 3mm are manufactured from non-hardened silver steel, 4mm and above are high quality through hardened mild steel.

**Tolerances:**  
3mm = +0.002, +0.006  
4 - 6mm = +0.004, +0.009  
8 - 10mm = +0.006, +0.0012  
12 - 16mm = +0.007, +0.0015.



**FASTENERS**



Metric			
Dia (mm)	Length mm	Weight per 100	Order Code KEN-650
2.5	6	36g	-0580K
	12	45g	-0640K
	8	120g	-0880K
	10	130g	-0900K
	12	140g	-0920K
	14	145g	-0930K
	16	150g	-0940K
	18	165g	-0950K
3	20	180g	-0960K
	24	188g	-0970K
	25	190g	-0980K
	28	200g	-0990K
	30	210g	-0995K
	40	300g	-1040K
	6	75g	-1060K
	8	87g	-1080K
	10	100g	-1100K
	12	150g	-1120K
4	14	200g	-1130K
	16	220g	-1140K
	18	239g	-1150K
	20	240g	-1160K
	24	280g	-1170K
	25	300g	-1180K
	28	307g	-1190K
	30	310g	-1200K
	40	410g	-1240K
	12	220g	-1320K
5	16	300g	-1340K
	18	350g	-1350K
	20	400g	-1360K
	24	420g	-1370K
	25	420g	-1380K
	30	500g	-1400K
	32	540g	-1410K
	35	600g	-1420K
	40	640g	-1440K
	50	800g	-1460K
6	10	430g	-0151K
	14	450g	-1530K
	16	470g	-1540K
	18	480g	-1550K
	20	500g	-1560K
	24	530g	-1570K
	25	600kg	-1580K
	28	660g	-1590K
	30	700g	-1600K
	32	740g	-1610K
8	35	800g	-1620K
	36	820g	-1630K
	40	900g	-1640K
	50	1.10kg	-1680K
	60	1.40kg	-1720K
	16	700g	-1840K
	20	780g	-1860K
	24	960g	-1870K
	25	1.00kg	-1880K
	30	1.20kg	-1900K
10	32	1.28kg	-1910K
	35	1.40kg	-1920K
	40	1.60kg	-1940K
	45	1.80kg	-1960K
	50	2.00kg	-1980K
	60	2.30kg	-2020K
	70	2.50kg	-2040K
	80	3.00kg	-2080K

Metric . . . continued			
Dia (mm)	Length mm	Weight per 100	Order Code KEN-650
10	20	1.30kg	-2160K
	24	1.60kg	-2170K
	25	1.60kg	-2180K
	30	1.90kg	-2200K
	32	2.00kg	-2210K
	35	2.20kg	-2220K
	40	2.50kg	-2240K
	45	2.80kg	-2260K
	50	3.20kg	-2280K
	60	37.0kg	-2320K
12	70	4.30kg	-2340K
	80	5.00kg	-2360K
	90	5.70kg	-2380K
	100	7.10kg	-2400K
	20	2.20kg	-2460K
	24	2.30kg	-2470K
	25	2.30kg	-2480K
	28	2.65kg	-2490K
	30	2.80kg	-2500K
	32	3.00kg	-2510K
16	35	3.20kg	-2520K
	40	7.30kg	-2540K
	45	4.10kg	-2560K
	50	4.60kg	-2580K
	60	5.50kg	-2620K
	70	6.20kg	-2640K
	80	7.10kg	-2660K
	90	8.00kg	-2680K
	100	8.90kg	-2700K
	40	6.30kg	-2840K
20	50	7.90kg	-2880K
	60	9.50kg	-2920K
	70	11.00kg	-2940K
	80	12.00kg	-2960K
	100	15.80kg	-3000K
	80	19.80kg	-3280K

Sizes 1/16" and 1/8" are manufactured from non-hardened silver steel, 3/16" and above are high quality case hardened mild steel.

**Tolerances:** All sizes = +0.001" +0.003".

Inch			
Dia.	Length	Weight per 100	Order Code KEN-650
1/8"	1/4"	110g	-4620K
	3/8"	120g	-4660K
	1/2"	130g	-4700K
	5/8"	140g	-4740K
	3/4"	150g	-4760K
	1"	200g	-4800K
	1 1/2"	300g	-4880K
	2"	600g	-4960K
	1/2"	280g	-5500K
	5/8"	300g	-5540K
3/16"	3/4"	400g	-5560K
	1"	500g	-5600K
	1 1/4"	550g	-5640K
	1 1/2"	600g	-5680K
	2"	800g	-5760K
	1/2"	400g	-6300K
	5/8"	500g	-6340K
	3/4"	550g	-6360K
	1"	700g	-6400K
	1 1/4"	820g	-6440K
1/4"	1 1/2"	1.10kg	-6480K
	1"	1.20kg	-6900K
	1 1/4"	1.40kg	-6940K
	1 1/2"	1.60kg	-6980K
	2"	2.20kg	-7060K
	2 1/2"	2.80kg	-7140K
	3"	3.20kg	-7220K
	3 1/2"	3.90kg	-7300K
	3/4"	1.30kg	-7460K
	1"	1.60kg	-7500K
5/16"	1 1/4"	2.10kg	-7540K
	1 1/2"	2.40kg	-7580K
	1 3/4"	2.80kg	-7620K
	2"	3.10kg	-7660K
	2 1/2"	3.90kg	-7740K
	3"	4.60kg	-7820K

Inch . . . continued			
Dia.	Length	Weight per 100	Order Code KEN-650
1/2"	1"	3.00kg	-8100K
	1 1/2"	4.10kg	-8180K
	1 3/4"	4.80kg	-8220K
	2 1/4"	6.10kg	-8300K
	2 1/2"	6.80kg	-8340K
	2 3/4"	12.20kg	-8380K
	3"	8.00kg	-8420K
	3 1/2"	9.30kg	-8480K
5/8"	4"	10.70kg	-8520K
	1 1/4"	6.80kg	-8700K
	2"	8.60kg	-8760K
	3"	12.20kg	-8920K

**Extractable Dowels**

Extractable dowel pins complete with inner thread and slight flats for air release.

**DIN 7979D. EN 28735. ISO 8735.**

**Material:** AISI-52100 or DIN 1-3505 100 Cr 6.

**Hardness:** 57-63 HRC.



Metric			
Dia.	Length	Weight per 100	Order Code KEN-651
4	10		-0650K
	16		-0680K
	20		-0700K
	30		-0720K
	20		-0860K
5	30		-0910K
	50	410g	-0970K
	60	510g	-0980K
6	12		-1000K
	16	150g	-1020K
	20	180g	-1040K
	24	220g	-1060K
	25	240g	-1080K
	28	260g	-1100K
	30	270g	-1120K
	32	290g	-1140K
	36	310g	-1160K
	40	350g	-1180K
8	50	440g	-1220K
	60	540g	-1240K
	20	320g	-1440K
	24	390g	-1460K
	25	400g	-1480K
	28	430g	-1500K
	30	470g	-1520K
	32	500g	-1540K
	36	550g	-1560K
	40	630g	-1580K
10	45	710g	-1600K
	50	790g	-1620K
	60	910g	-1640K
	70	990g	-1660K
	20	490g	-1840K
	24	620g	-1860K
	25	640g	-1880K
	30	740g	-1920K
	35	840g	-1950K
	40	1.00kg	-1980K
12	50	1.27kg	-2020K
	60	1.45kg	-2040K
	70	1.72kg	-2060K
	80	2.00kg	-2080K
	90	2.27kg	-2100K
	100	2.82kg	-2120K
	24	900g	-2460K
	25	1.00kg	-2480K
	30	1.09kg	-2520K
	36	1.27kg	-2560K
40	1.45kg	-2580K	
16	50	1.81kg	-2620K
	60	2.18kg	-2640K
	70	2.45kg	-2660K
	80	2.81kg	-2680K
	90	3.18kg	-2700K
	100	3.54kg	-2720K
	40	1.26kg	-3180K
	50	1.58kg	-3220K
	60	1.90kg	-3240K
	70	2.20kg	-3260K
20	80	2.50kg	-3280K
	90	2.90kg	-3300K
	100	3.15kg	-3320K
	50	1.98kg	-3620K
	80	3.13kg	-3680K



Colour-coded at each end of length for easy identification as shown.



● Yellow = Metric   
 ● Green = BSF   
 ● Blue = UNF  
● Red = BSW   
 ○ White = UNC   
 ● Orange = Grade 8.8  
● Black = Stainless Steel

**Mild Steel - Grade 4.6 Self-Colour**

Thread	Length	Weight each	Order Code KEN-670
<span style="color: yellow;">●</span> <b>Metric</b>			
M5	300mm	36g	-0550K
M6	300mm	51g	-0560K
M8	300mm	93g	-0580K
M10	300mm	147g	-0600K
M12	300mm	213g	-0620K
M14	300mm	289g	-0640K
M16	300mm	365g	-0660K
M20	300mm		-0700K
M24	300mm		-0720K
M3	1m	42g	-0030K
M4	1m	75g	-0040K
M5	1m	120g	-0050K
M6	1m	170g	-0060K
M8	1m	310g	-0080K
M10	1m	490g	-0100K
M12	1m	710g	-0120K
M14	1m	970g	-0140K
M16	1m	1.31kg	-0160K
M20	1m	2.06kg	-0200K
M24	1m	2.95kg	-0240K
M30	1m	4.65kg	-0300K
M36	1m		-0360K
<span style="color: red;">●</span> <b>BSW</b>			
3/16"	3ft	111g	-1030K
1/4"	3ft	157g	-1040K
5/16"	3ft	286g	-1050K
3/8"	3ft	452g	-1060K
7/16"	3ft	540g	-1070K
1/2"	3ft	655g	-1080K
5/8"	3ft	1.21kg	-1100K
3/4"	3ft	1.90kg	-1120K
7/8"	3ft	2.31kg	-1140K
1"	3ft	2.72kg	-1160K
<span style="color: white;">○</span> <b>UNC</b>			
1/4"	3ft	157g	-3040K
3/8"	3ft	452g	-3060K
7/16"	3ft	554g	-3070K
1/2"	3ft	665g	-3080K
5/8"	3ft	1.21kg	-3100K
3/4"	3ft	1.90kg	-3120K
1"	3ft	2.72kg	-3160K
<span style="color: purple;">●</span> <b>UNF</b>			
1/4"	3ft	157g	-4040K
5/16"	3ft	286g	-4050K
3/8"	3ft	452g	-4060K
7/16"	3ft	554g	-4070K
1/2"	3ft	665g	-4080K

**Mild Steel - Grade 4.6 Zinc-Plated**

Thread	Length	Weight each	Order Code KEN-670
<span style="color: yellow;">●</span> <b>Metric</b>			
M3	1m	42g	-5203K
M4	1m	75g	-5204K
M5	1m	120g	-5205K
M6	1m	170g	-5206K
M8	1m	310g	-5208K
M10	1m	490g	-5210K
M12	1m	710g	-5212K
M14	1m	970g	-5214K
M16	1m	1.31kg	-5216K
M20	1m	2.06kg	-5220K
M24	1m	2.95kg	-5224K
M30	1m		-5230K

**High Tensile Steel - Grade 8.8**

Thread	Length	Weight each	Order Code KEN-670
<span style="color: yellow;">●</span> <b>Metric</b> <span style="color: orange;">●</span>			
M6	1m	170g	-6060K
M8	1m	310g	-6080K
M10	1m	490g	-6100K
M12	1m	710g	-6120K
M16	1m	1.31kg	-6160K
M20	1m	2.06kg	-6200K
M24	1m	2.95kg	-6240K

**Stainless Steel A2**

Thread	Length	Weight each	Order Code KEN-670
<span style="color: yellow;">●</span> <b>Metric</b> <span style="color: black;">●</span>			
M3	1m	42g	-7030K
M4	1m	75g	-7040K
M5	1m	120g	-7050K
M6	1m	170g	-7060K
M8	1m	310g	-7080K
M10	1m	490g	-7100K
M12	1m	710g	-7120K
M16	1m	1.31kg	-7160K
M20	1m	2.06kg	-7200K
M24	1m	2.95kg	-7240K

**QUALFAST Steel Balls**

Low carbon case hardened steel balls are for general use in castors, conveyors, non-precision bearings and any slow rotating parts. They have resistance to shock loads with a good load carrying ability and excellent resistance to surface wear. The G100 standard ball is of a high spherical standard.



Diameter	Pack Qty	Weight	Order Code QFT-671
<b>Metric</b>			
2mm	100	4g	-1002B
3mm	50	6g	-1003C
4mm	50	18g	-1004D
5mm	50	26g	-1005E
6mm	50	44g	-1006F
7mm	50	70g	-1007R
8mm	25	55g	-1008G
10mm	25	105g	-1010J
12mm	10	71g	-1012L
16mm	10	168g	-1016Q
20mm	10	327g	-1020S
<b>Inch</b>			
3/32"	50	5g	-0806M
1/8"	50	6g	-0808R
3/16"	50	22g	-0812B
1/4"	50	53g	-0816D
5/16"	25	52g	-0820F
3/8"	25	89g	-0824H
7/16"	25	141g	-0828K
1/2"	10	141g	-0832M